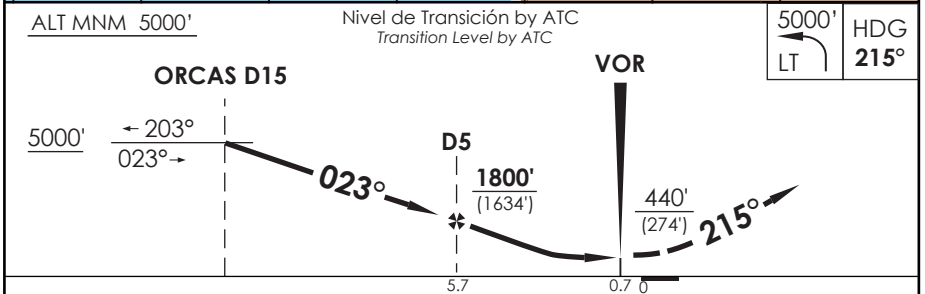
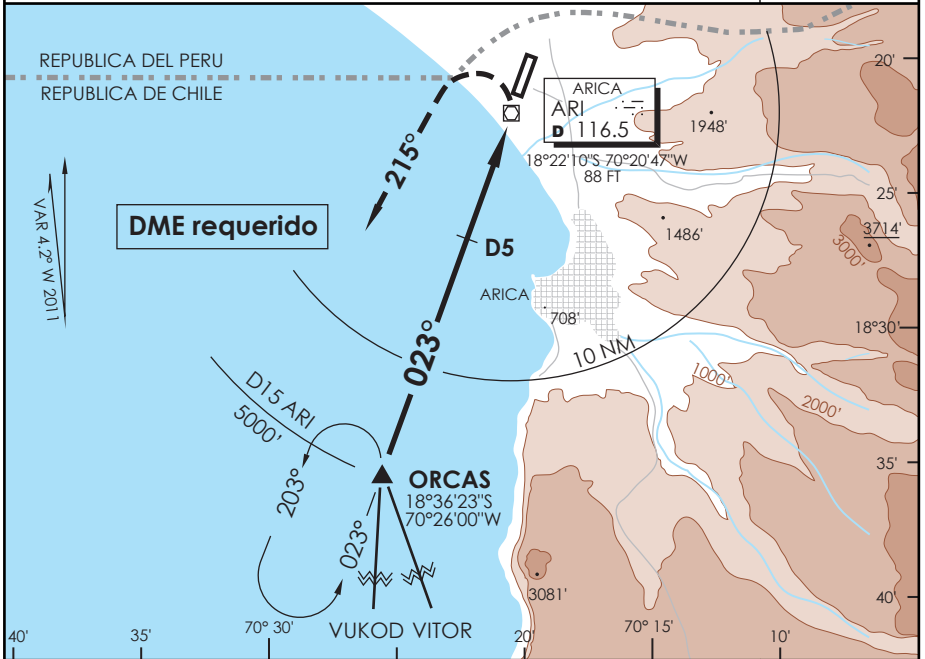


AP. CHACALLUTA
ARICA - CHILE

SCAR IAC 1
VOR Z Rwy 02

APP ARICA Arica Approach	119.9	TORRE ARICA Arica Tower	118.5	CONTROL TERRESTRE Ground Control	121.9
VOR ARI 116.5	FINAL APCH CRS 023°	MNM ALT D5 1800' (1634')	MDA (H) 440' (274')	AD Elev THR 02 Elev	166' 123'
APCH FRUSTRADA: Viraje izquierda HDG 215° en ascenso para 5000', luego según autorización ATC. <i>Missed Apch: Left turn HDG 215° climbing to 5000', then according to ATC clearance.</i>					11000 FT
					MSA 25 NM ARI



C A T E G O R I A	DIRECTO RWY 02 Straight in RWY 02	CIRCULANDO ESTE Circling East	ALTN Alternate Minimums			
	MDA 440' (274')					
	1.6 Km	640' (474')	1.6 Km	(800')	3.2 Km	
		960' (794')				
		1120' (954')	4.8 Km	(954')	4.8 Km	
1460' (1294')		(1294')				
Veloc. Terrestre Kts	70	90	100	120	140	160
FAF to MAP 5.0	4:17	3:19	3:00	2:30	2:08	1:52

DASA / SECCION AS-WAP