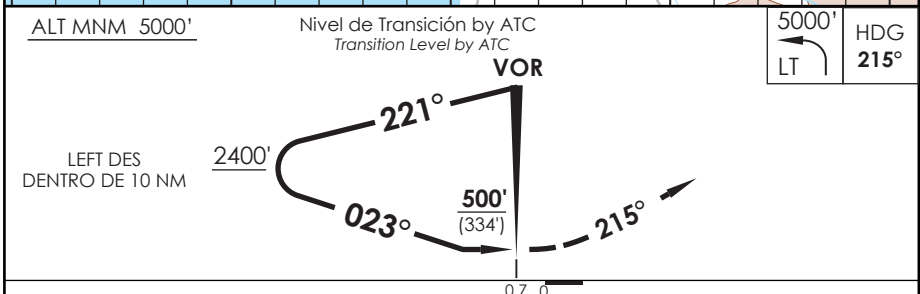
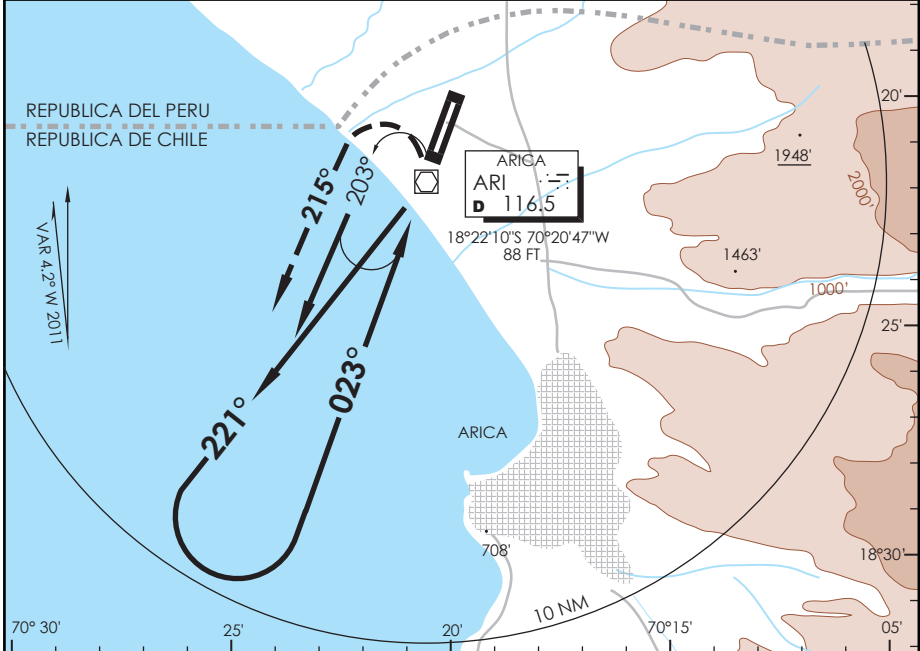


AP. CHACALLUTA  
**ARICA - CHILE**

SCAR IAC 2  
**VOR Y Rwy 02**

APP ARICA Arica Approach	119.9	TORRE ARICA Arica Tower	118.5	CONTROL TERRESTRE Ground Control	121.9
VOR ARI <b>116.5</b>	FINAL APCH CRS <b>023°</b>	<b>WO FAF</b>	MDA (H) <b>500' (334')</b>	AD Elev <b>166'</b> THR 02 Elev <b>123'</b>	
APCH FRUSTRADA: Viraje izquierda HDG 215° en ascenso para 5000', luego viraje izquierda directo ARI VOR e ingreso HLDG 023° izquierdo. Missed Apch: Left turn HDG 215° climbing to 5000', then left turn direct to ARI VOR and enter on HLDG 023° left.					



DIRECTO RWY 02 CIRCULANDO ESTE ALTN	DIRECTO RWY 02 <i>Straight in RWY 02</i>					CIRCULANDO ESTE Circling East		ALTN Alternate Minimums		
	MDA <b>500' (334')</b>									
	A	1.6 Km					640' (474')	1.6 Km	(800')	3.2 Km
	B						960' (794')			
	C						1120' (954')	4.8 Km	(954')	4.8 Km
D	1460' (1294')						(1294')			
Veloc. Terrestre Kts		70	90	100	120	140	160			

DASA / SECCION AIG-MAP