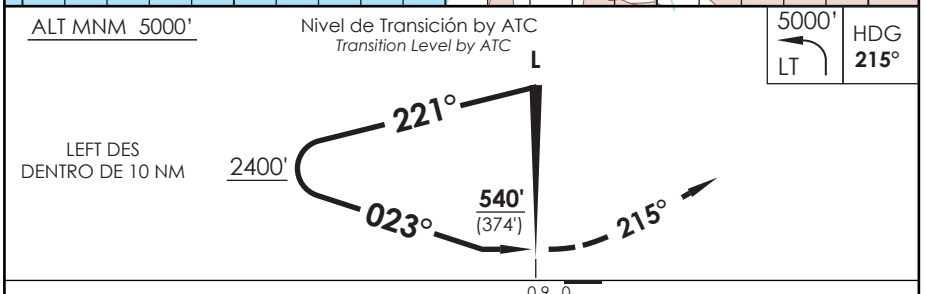
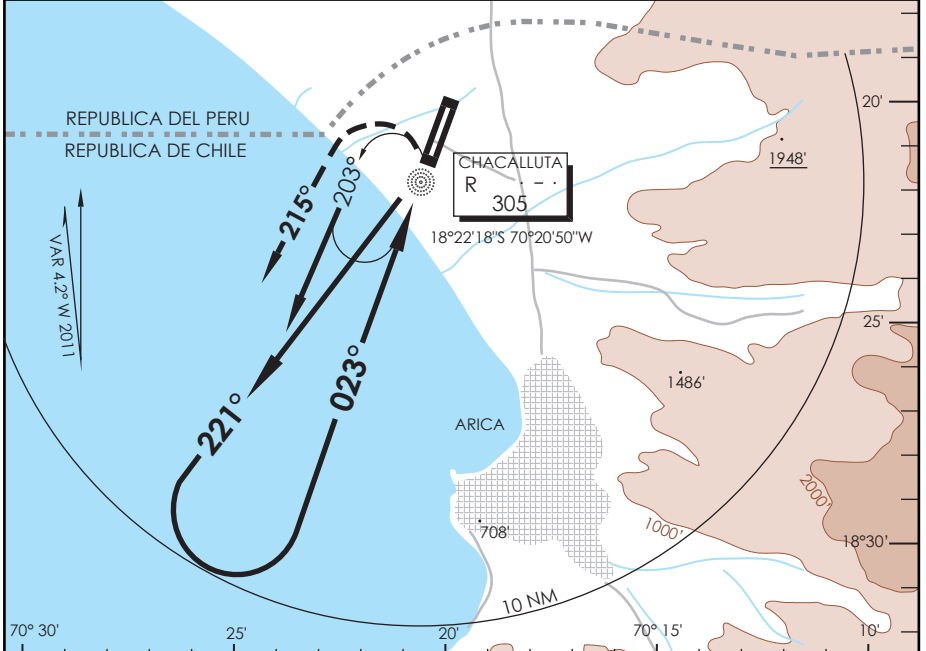


AP. CHACALLUTA
ARICA - CHILE

SCAR IAC 3
NDB Rwy 02

APP ARICA Arica Approach 119.9		TORRE ARICA Arica Tower 118.5		CONTROL TERRESTRE Ground Control 121.9	
L "R" 305	FINAL APCH CRS 023°	WO FAF	MDA (H) 540' (374')	AD Elev 166' THR 02 Elev 123'	11000 FT MSA 25 NM ARI
APCH FRUSTRADA: Viraje izquierda HDG 215° en ascenso para 5000', luego viraje izquierda directo L "R" e ingreso HLDG 023° izquierdo. Missed Apch: Left turn HDG 215° climbing to 5000', then left turn direct to L "R" and enter on HLDG 023° left.					



C R O C H E T A R O G R A M A	DIRECTO RWY 02 <i>Straight in RWY 02</i>		CIRCULANDO ESTE Circling East	ALTN Alternate Minimums			
	MDA 540' (374')			1.6 Km (800')	3.2 Km		
	A	1.6 Km	640' (474')		4.8 Km (954')	4.8 Km	
	B		960' (794')				
C			1120' (954')				
D	2.0 Km	1460' (1294')					
Veloc. Terrestre Kts		70	90	100	120	140	160

DASA / SECCION A8-MAP