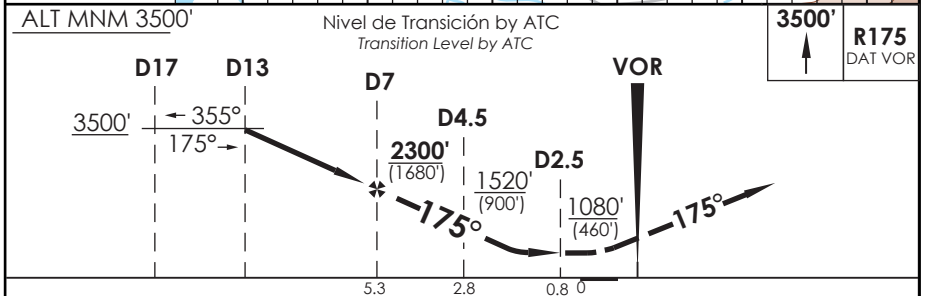
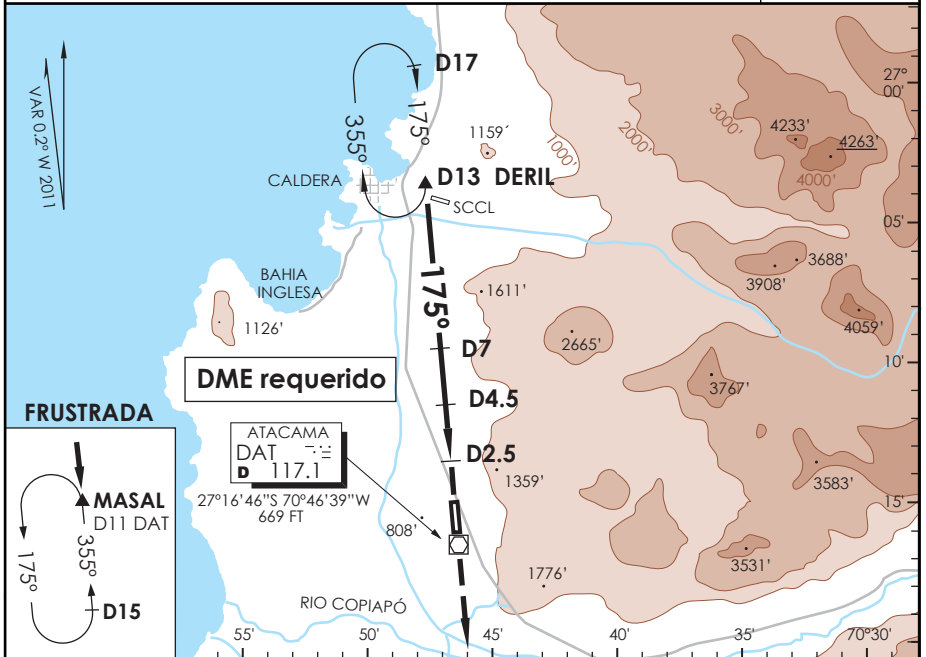


# AD. DESIERTO DE ATACAMA COPIAPO - CHILE

SCAT IAC 2  
VOR Rwy 17

SANTIAGO RADAR Santiago Radar		128.3	TORRE ATACAMA Atacama Tower		118.3	CONTROL TERRESTRE Ground Control		121.6
VOR DAT <b>117.1</b>	FINAL APCH CRS <b>175°</b>	MNM ALT D 7 <b>2300' (1680')</b>		MDA <b>1080' (460')</b>		AD Elev. <b>670'</b> THR 17 Elev. <b>620'</b>		7000 FT MSA 25 NM DAT
APCH FRUSTRADA: Ascenso 3500' R175 VOR DAT, ingrese HLDG MASAL 355° izquierdo o según autorización ATC. Missed Apch: Climb to 3500' on R175 DAT VOR, enter on HLDG MASAL 355° left or according to ATC clearance.								



UNIFORMADO	DIRECTO RWY 17 <i>Straight in RWY 17</i>					CIRCULANDO OESTE Circling West	ALTN Alternate Minimums
	MDA <b>1080' (460')</b>						
	ALS		WO ALS				
A	1.2 Km		1.6 Km			1120' (450')	(800') 3.2 Km
B	1.6 Km		2.0 Km			1.6 Km	
C	1.6 Km		2.0 Km			2.4 Km	
D	2.0 Km		2.4 Km			3.2 Km	
Veloc. Terrestre Kts		90	120	150	180	210	

DASA / SECCION ASES-MAP