
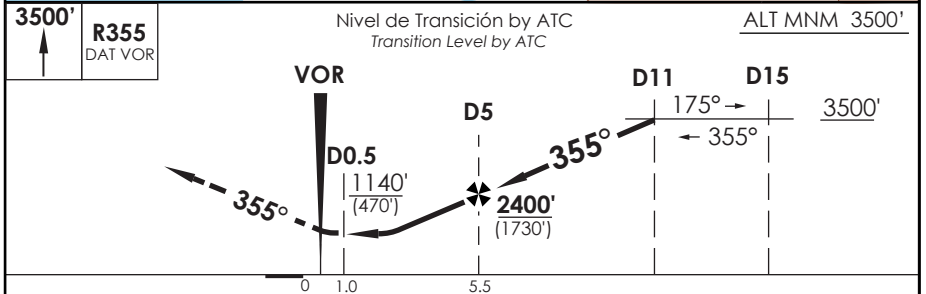
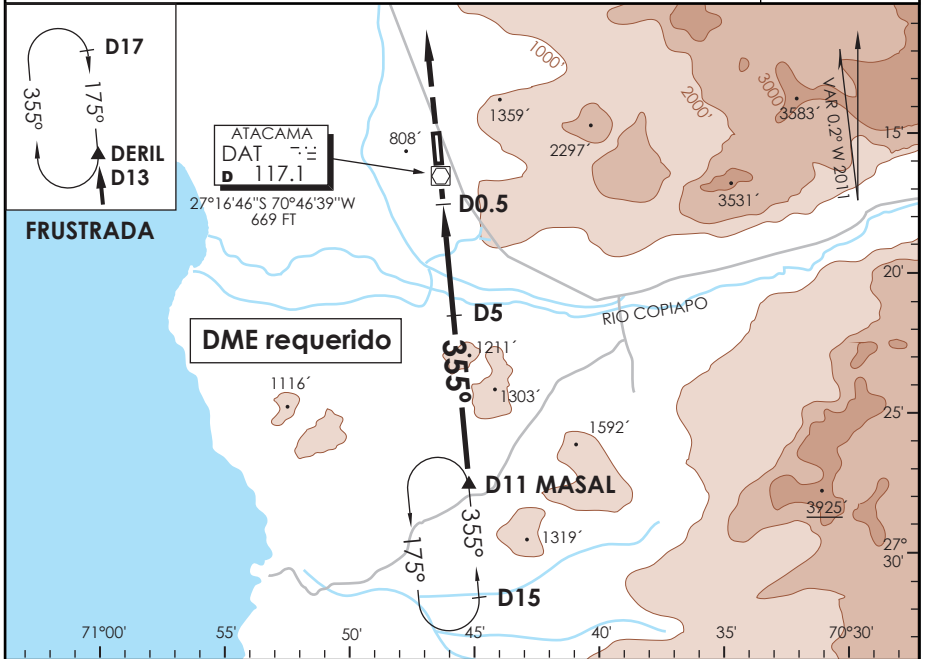


AD. DESIERTO DE ATACAMA COPIAPO - CHILE

SCAT IAC 3
VOR Rwy 35

SANTIAGO RADAR Santiago Radar	128.3	TORRE ATACAMA Atacama Tower	118.3	CONTROL TERRESTRE Ground Control	121.6
VOR DAT 117.1	FINAL APCH CRS 355°	MNM ALT D5 2400' (1730')	MDA 1140' (470')	AD Elev. 670' THR 35 Elev. 670'	 MSA 25 NM DAT
APCH FRUSTRADA: Ascenso 3500' R355 VOR DAT, ingrese HLDG DERIL 175° derecho o según autorización ATC. Missed Apch: Climb to 3500' on R355 DAT VOR, enter on HLDG DERIL 175° right or according to ATC clearance.					



A-B-C-D	DIRECTO RWY 35 <i>Straight in RWY 35</i>					CIRCULANDO OESTE Circling West	ALTN Alternate Minimums
	MDA 1140' (470')						
A	1.6 Km					1140'	(800') 3.2 Km
B	2.0 Km					(470')	
C	2.4 Km					1220'	
D	2.4 Km					(550')	
Veloc. Terrestre Kts		90	120	150	180	210	

DASA / SECCION AS-MAP