
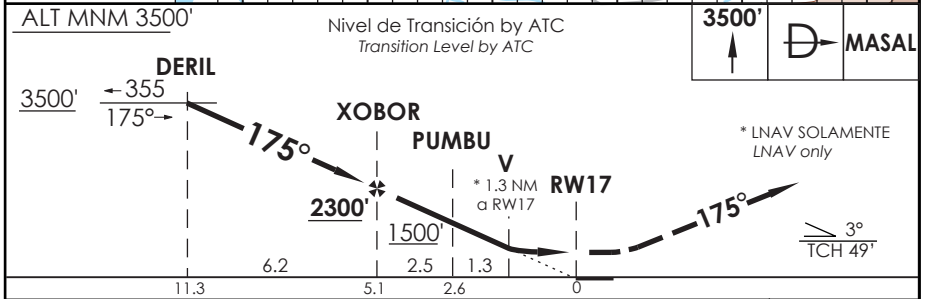
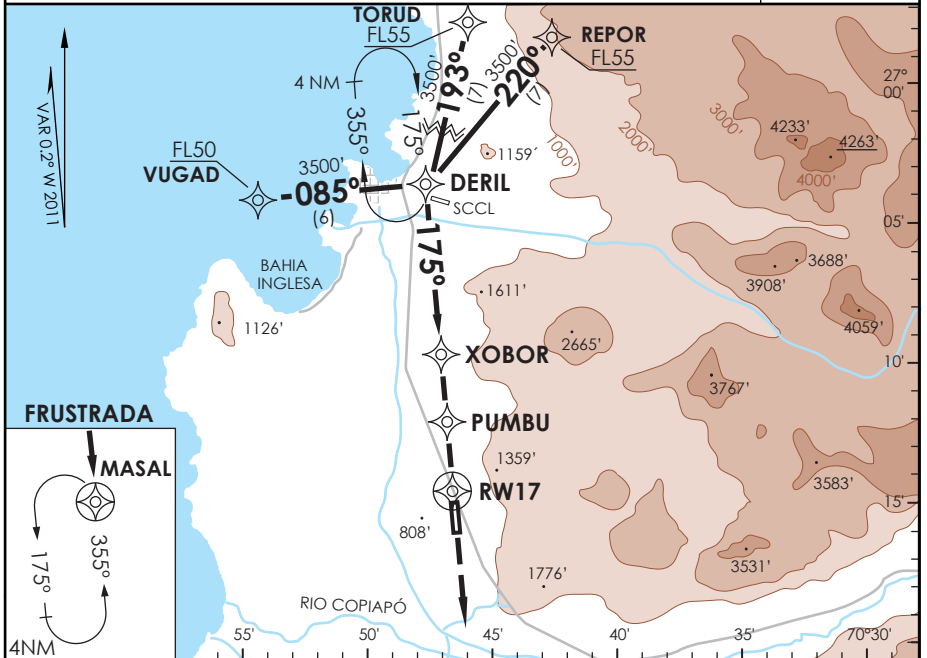


AD DESIERTO DE ATACAMA COPIAPO - CHILE

SCAT IAC 4 RNAV (GNSS) Rwy 17

| | | | | | |
|---|-------------------------------|---------------------------------------|---------------------------------------|--|--|
| SANTIAGO RADAR Santiago Radar | 128.3 | TORRE ATACAMA Atacama Tower | 118.3 | CONTROL TERRESTRE Ground Control | 121.6 |
| RNAV | FINAL APCH CRS 175° | MNM ALT FAF17 2300' (1680') | LNAV/VNAV DA(H) 960' (340') | AD Elev. 670' THR 17 Elev. 620' |  7000 FT MSA 25 NM RW17 |
| APCH FRUSTRADA: Ascenso 3500' directo a MASAL, ingrese HLDG 355° izquierdo o según autorización ATC. Missed Apch: Climb to 3500' direct to MASAL, enter on HLDG 355° left or according to ATC clearance. | | | | | |



| | | | | | | |
|---|--|--------|------------------------------|--------|-------------------------------|-----------------------------------|
| C A T E G O R Í A | DIRECTO RWY 17 <i>Straight in RWY 17</i> | | | | CIRCULANDO <i>Circling</i> | ALTN <i>Alternate Minimums</i> |
| | LNAV/VNAV DA 960' (340') | | LNAV MDA 1080' (460') | | | |
| | ALS | WO ALS | ALS | WO ALS | | |
| A | 1.2 Km | 1.6 Km | 1.2 Km | 1.6 Km | 1120' | 1.6 Km |
| B | | | 1.6 Km | 2.0 Km | (450') | 2.4 Km |
| C | | | 2.0 Km | 2.4 Km | 1220' | NA |
| D | | | | | (550') | |

| | | | | | | | | | | | |
|---|----|-----|-----|-----|-----|--|--|--|--|--|--|
| - AUTH de acuerdo a DAN 06-21 - Authorization according to DAN 06-21 | | | | | | Para sistemas Baro VNAV no compensados proc NA bajo 0°C o sobre 38°C. For uncompensated Baro VNAV systems procedure NA below 0°C or above 38°C. | | | | | |
| Veloc. Terrestre Kts | 90 | 120 | 150 | 180 | 210 | | | | | | |

DASA / SECCION AIS-MAP