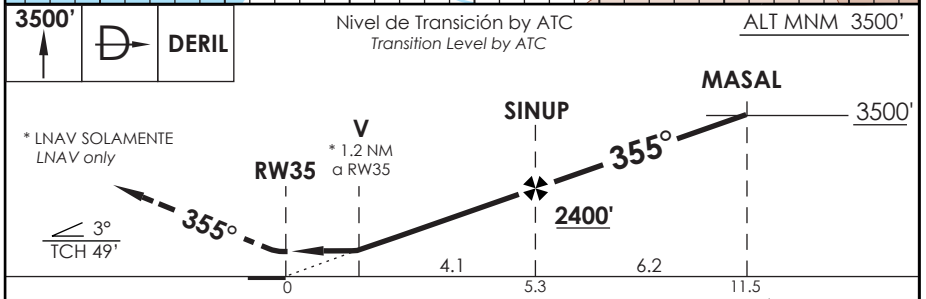
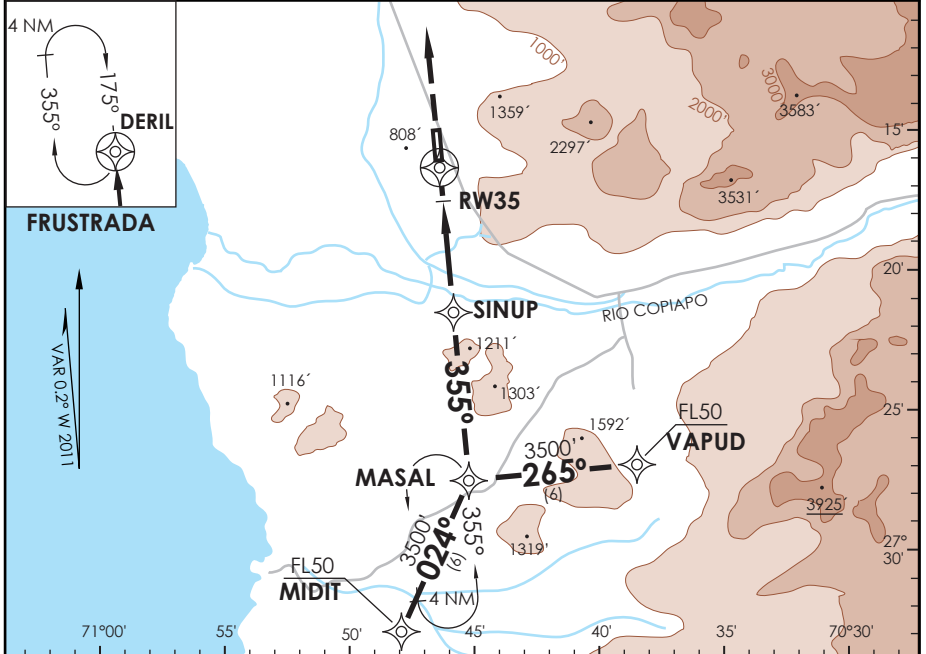


AD DESIERTO DE ATACAMA COPIAPO - CHILE

SCAT IAC 5 RNAV (GNSS) Rwy 35

SANTIAGO RADAR Santiago Radar	128.3	TORRE ATACAMA Atacama Tower	118.3	CONTROL TERRESTRE Ground Control	121.6
RNAV	FINAL APCH CRS 355°	MNM ALT FAF35 2400' (1730')	LNAV/VNAV DA (H) 1100' (430')	AD Elev. 670' THR 35 Elev. 670'	7000 FT MSA 25 NM RW35
APCH FRUSTRADA: Ascenso 3500' directo a DERIL, ingreso HLDG 175° derecho o según autorización ATC. Missed Apch: Climb to 3500' direct to DERIL, enter on HLDG 175° right or according to ATC clearance.					



CATEGORÍA	DIRECTO RWY 35 <i>Straight in RWY 35</i>		CIRCULANDO <i>Circling</i>	ALTN <i>Alternate Minimums</i>
	LNAV/VNAV DA 1100' (430')	LNAV MDA 1100' (430')		
A	1.6 Km	1.6 Km	1120'	NA
B			(450')	
C	2.0 Km	2.0 Km	1220'	
D	2.4 Km	2.4 Km	(550')	

- AUTH de acuerdo a DAN 06-21 - Authorization according to DAN 06-21						Para sistemas Baro VNAV no compensados proc NA bajo 0°C o sobre 39°C. For uncompensated Baro VNAV systems procedure NA below 0°C or above 39°C.
Veloc. Terrestre Kts	90	120	150	180	210	

DASA / SECCION IAS-MAP