
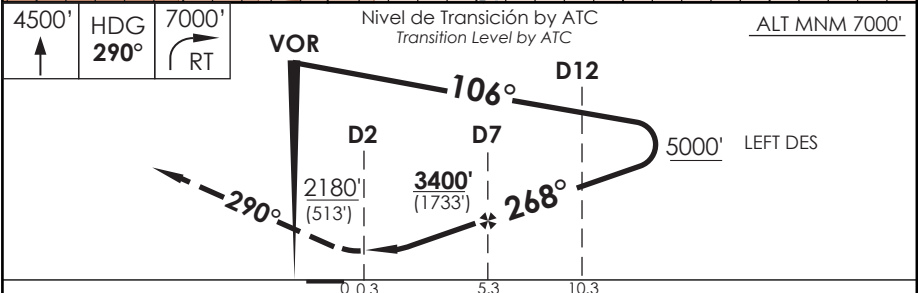
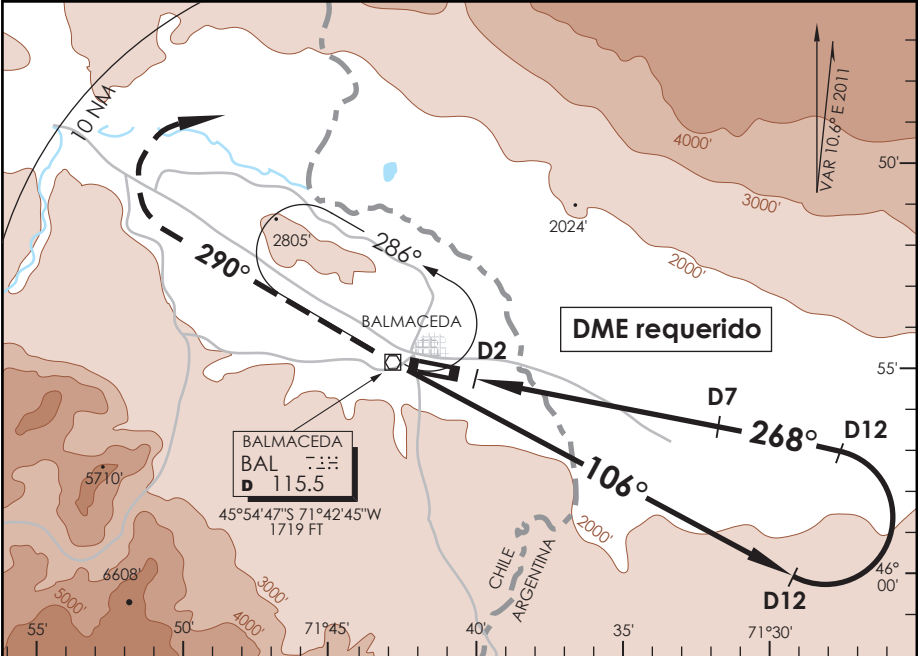


AD. BALMACEDA
BALMACEDA - CHILE

SCBA IAC 2
VOR Rwy 27

APP PUERTO MONTI RADAR Puerto Montt Approach		128.3 / 119.7	TORRE BALMACEDA Balmaceda Tower		118.5	CONTROL TERRESTRE Ground Control		121.9
VOR BAL 115.5	FINAL APCH CRS 268°	MNM ALT D7 3400' (1733')	MDA(H) 2180' (513')		AD Elev THR 27 Elev	1722' 1667'		11300 FT  MSA 25 NM BAL
APCH FRUSTRADA: Ascenso 4500' HDG 290° dentro de 10 NM, viraje derecha directo BAL VOR, ascenso 7000 Ft según autorización ATC. <i>Missed Apch: Climb to 4500' on HDG 290° within 10 NM, right turn direct to BAL VOR, climb to 7000' according to ATC clearance.</i>								



C A T E G O R Í A	DIRECTO RWY 27 <i>Straight in RWY 27</i>		CIRCULANDO <i>Circling</i>		ALTN <i>Alternate Minimums</i>	
	MDA 2180' (513')					
	A	1.6 Km	2440' (718')	2.0 Km (878')	3.2 Km	
	B		2600' (878')			
	C	2.4 Km	2760' (1038')	4.8 Km (1038')	4.8 Km	
D	2.8 Km					
Veloc. Terrestre Kts		90	120	150	180	180

DASA / SECCION AS/WAP