

PTO. MONTT

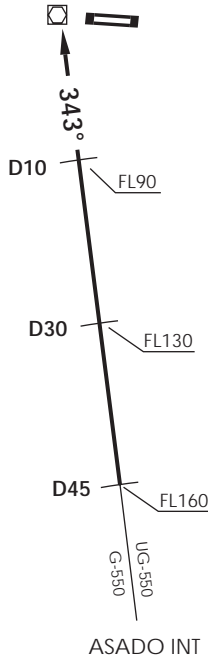
RDR 128.3 / 119.7

BALMACEDA

TWR 118.5

BALMACEDA
 BAL
 D 115.5

45°54'47"S 71°42'45"W
 1719 FT



Nivel de Transición by ATC
 Transition Level by ATC

No se ajusta a escala / Not to scale

STAR BARTY 2

En D45 S BAL VOR/DME interceptar R163 (TR343°) a FL160 o superior, cruzar D30 S FL130 o superior, D10 S FL90 o superior, directo BAL VOR/DME 7000FT o superior, luego según autorización ATC.

At D45 S BAL VOR/DME intercept R163 (TR343°) at or above FL160, cross D30 S at or above FL130, D10 S at or above FL90 direct to BAL VOR/DME at or above 7000FT, then according to ATC clearance.

DASA / SECCION AIS-MAP