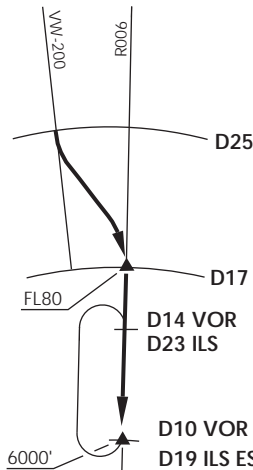


VAR 3.3° W 2010

CAMAR INT



IQUIQUE

RDR 122.7 / 124.9  
 TWR 118.9

D10 VOR KORAL 20°12'28"S / 70°09'48"W  
 D19 ILS ESMER 20°12'19"S / 70°09'49"W

IQUIQUE  
 IQQ ::=:⋮  
 D 113.3  
 20°22'29"S 70°10'21"W  
 261 FT

IQQ ::=:⋮  
 D 109.9 186°  
 20°33'11"S 70°10'56"W

Nivel de Transición by ATC  
 Transition Level by ATC

No se ajusta a escala / Not to scale

### STAR CAVAN 2

En D25 N IQQ VOR/DME, abandonar AWY para interceptar R006 (TR186°) IQQ VOR directo a KORAL INT / ESMER INT. Cruzar D17 N IQQ a FL80 o superior, cruzar KORAL INT / ESMER INT a 6000FT o superior, luego según autorización ATC.

*At D25 N IQQ VOR/DME, leave AWY to intercept R006 (TR186°) IQQ VOR direct to KORAL INT / ESMER INT. Cross D17 N IQQ at or above FL80, cross KORAL INT / ESMER INT at or above 6000FT, then according to ATC clearance.*