
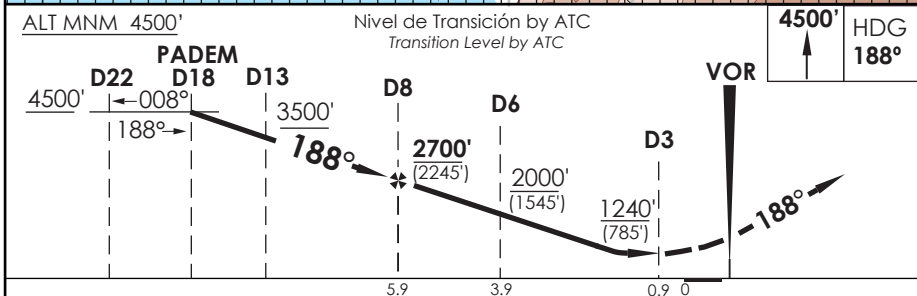
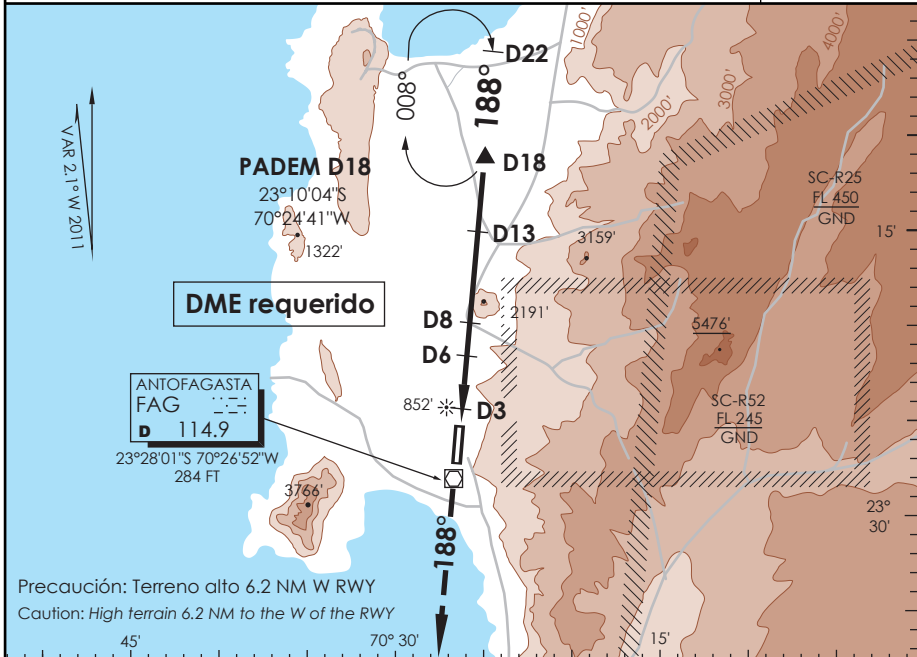


# AP. CERRO MORENO ANTOFAGASTA - CHILE

SCFA IAC 1  
VOR Z Rwy 19

|  |                               |  |                              |   |  |
|--|-------------------------------|--|------------------------------|---|--|
| APP ANTOFAGASTA RADAR<br>Antofagasta Approach 120.9 / 119.3  |                               | TORRE ANTOFAGASTA<br>Antofagasta Tower 118.1 |                              | CONTROL TERRESTRE<br>Ground Control 121.9 |  |
| VOR FAG<br><b>114.9</b>  | FINAL APCH CRS<br><b>188°</b> | MNM ALT D 8.0<br><b>2700'(2245')</b>         | MDA(H)<br><b>1240'(785')</b> | AD Elev.<br>THR 19 Elev <b>455'</b>       | <br>MSA 25 NM FAG |
| APCH FRUSTRADA: Ascenso a 4500' HDG 188°, luego según autorización ATC.<br>Missed Apch: Climb to 4500' on HDG 188°, then according to ATC clearance. |                               |  |                              |   |  |



| Categoría | DIRECTO RWY 19 Straight in RWY 19 |               | CIRCULANDO OESTE Circling West | ALTN Alternate Minimums |        |
|-----------|-----------------------------------|---------------|--------------------------------|-------------------------|--------|
|           | MDA <b>1240' (785')</b>           |               |                                |                         |        |
| A         | 1.6 Km                            | 1240' (785')  | 1.6 Km                         | (800')                  | 3.2 Km |
| B         | 2.0 Km                            | 1300' (845')  | 2.0 Km                         | (845')                  |        |
| C         | 3.6 Km                            | 1460' (1005') | 4.0 Km                         | (1005')                 | 4.0 Km |
| D         | 4.0 Km                            |               | 4.8 Km                         | (1005')                 | 4.8 Km |

|                      |      |      |      |      |      |      |
|----------------------|------|------|------|------|------|------|
| Veloc. Terrestre Kts | 70   | 90   | 100  | 120  | 140  | 160  |
| FAF to MAP± 5.0 NM   | 4:17 | 3:20 | 3:00 | 2:30 | 2:08 | 1:52 |

CAMBIO: MNM Circular /VAR  
Change: Circling MNM / VAR

DGAC AMDT 71

15 DICIEMBRE 2011

DASA / SECCION AIS-WAY