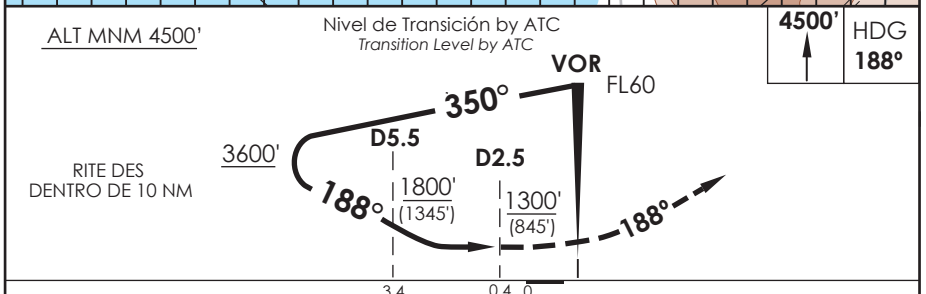
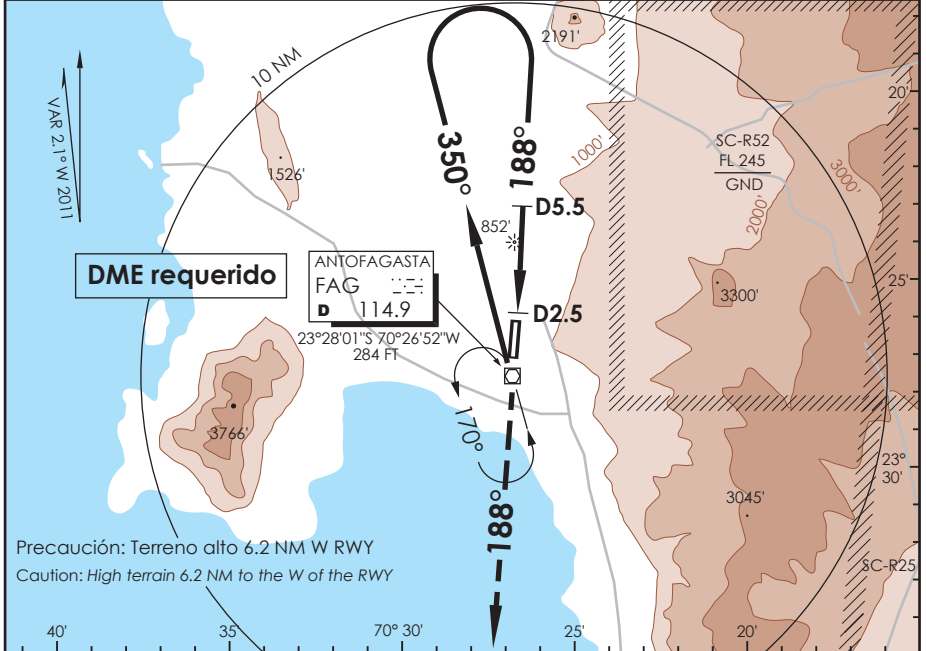


AP. CERRO MORENO ANTOFAGASTA - CHILE

SCFA IAC 3
VOR X Rwy 19

APP ANTOFAGASTA RADAR Antofagasta Approach 120.9 / 119.3		TORRE ANTOFAGASTA Antofagasta Tower 118.1		CONTROL TERRESTRE Ground Control 121.9	
VOR FAG 114.9	FINAL APCH CRS 188°	WO FAF	MDA(H) 1300' (845')	AD Elev. THR 19 Elev 455'	7200 FT MSA 25 NM FAG
APCH FRUSTRADA: Ascenso a 4500' HDG 188°, luego según autorización ATC. Missed Apch: Climb to 4500' on HDG 188°, then according to ATC clearance.					



Categoría	DIRECTO RWY 19 <i>Straight in RWY 19</i>		CIRCULANDO OESTE <i>Circling West</i>		ALTN <i>Alternate Minimums</i>	
	MDA 1300' (845')					
A	1.6 Km		1300' (845')	2.0 Km	(845')	3.2 Km
B	2.0 Km			4.0 Km		4.0 Km
C	4.0 Km		1460' (1005')	4.8 Km	(1005')	4.8 Km
D	4.4 Km					

CTN: Pendiente de descenso de mas de 3.5° (6.1%)
 CTN: Descent gradient greater than 3.5° (6.1%)

Veloc. Terrestre Kts	70	90	100	120	140	160

DASA / SECCION AIS-WAP