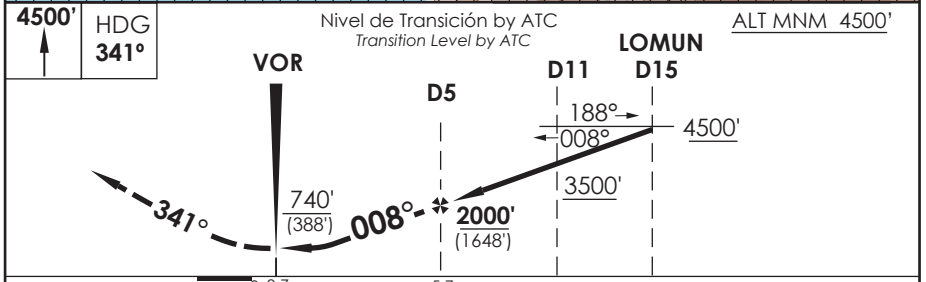
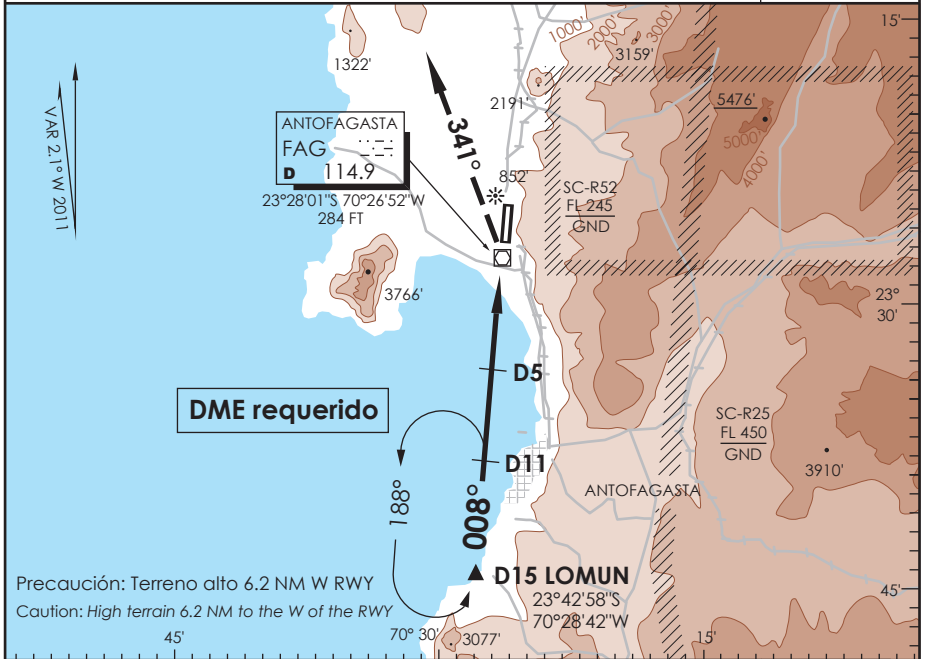


AP. CERRO MORENO ANTOFAGASTA - CHILE

SCFA IAC 4
VOR Z Rwy 01

APP ANTOFAGASTA RADAR Antofagasta Approach 120.9 / 119.3		TORRE ANTOFAGASTA Antofagasta Tower 118.1		CONTROL TERRESTRE Ground Control 121.9	
VOR FAG 114.9	FINAL APCH CRS 008°	MNM ALT D 5.0 2000' (1648')	MDA(H) 740' (388')	AD Elev. THR 01 Elev 455'	352'
APCH FRUSTRADA: Ascenso a 4500' HDG 341°, luego según autorización ATC. Missed Apch: Climb to 4500' on HDG 341°, then according to ATC clearance.					7200 FT MSA 25 NM FAG



Categoría de Operación	DIRECTO RWY 01 <i>Straight in RWY 01</i>		CIRCULANDO OESTE * <i>Circling West</i>	ALTN <i>Alternate Minimums</i>		
	MDA 740' (388')					
A	1.6 Km		960' (505')	1.6 Km	(800')	
B	1.6 Km		1300'	2.0 Km	(845')	
C	1.6 Km		(845')	4.0 Km	4.0 Km	
D	2.0 Km		1460' (1005')	4.8 Km	(1005') 4.8 Km	
* CAT C-D NA de noche / <i>Cat C-D not authorized at night</i>						
Veloc. Terrestre Kts	70	90	100	120	140	160
FAF to MAP 5.0 NM	4:17	3:20	3:00	2:30	2:08	1:52

DASA / SECCION AIS-MAP