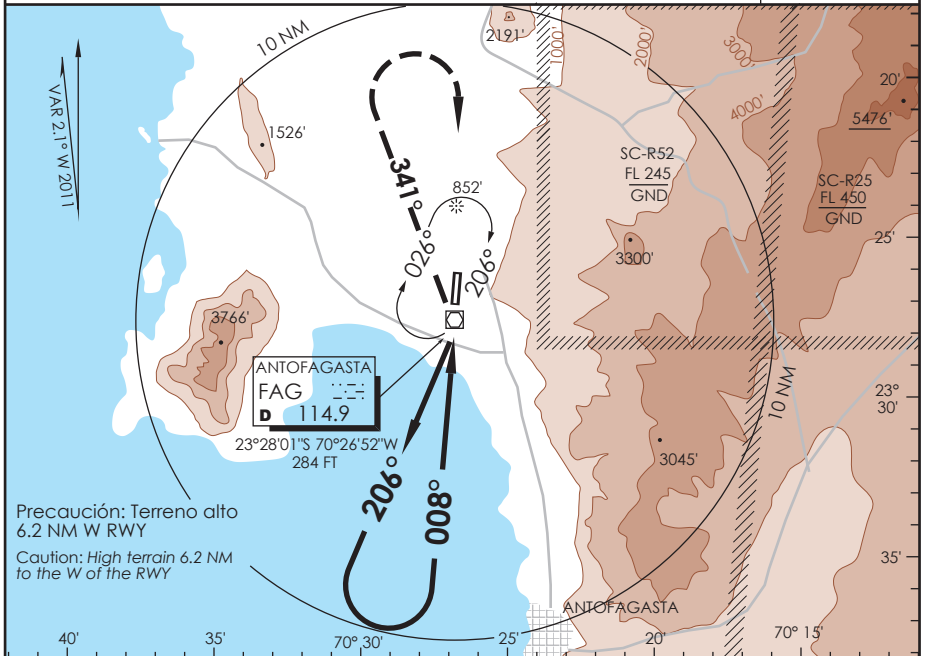


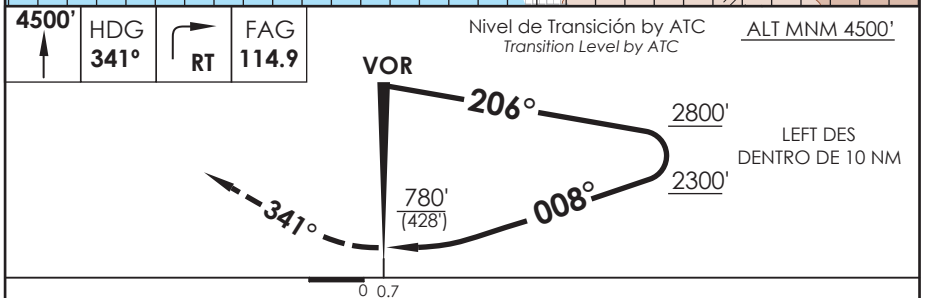
AP. CERRO MORENO ANTOFAGASTA - CHILE

SCFA IAC 5
VOR Y Rwy 01

APP ANTOFAGASTA RADAR Antofagasta Approach 120.9 / 119.3		TORRE ANTOFAGASTA Antofagasta Tower 118.1		CONTROL TERRESTRE Ground Control 121.9	
VOR FAG 114.9	FINAL APCH CRS 008°	WO FAF	MDA(H) 780' (428')	AD Elev. THR 01 Elev 455'	352'
APCH FRUSTRADA: Ascenso a 4500' HDG 341°, viraje derecha directo FAG VOR, luego según autorización ATC. Missed Apch: Climb to 4500' on HDG 341°, right turn direct to FAG VOR, then according to ATC clearance.					7200 FT MSA 25 NM FAG



Precaución: Terreno alto
6.2 NM W RWY
Caution: High terrain 6.2 NM
to the W of the RWY



Categorización	DIRECTO RWY 01 <i>Straight in RWY 01</i>	CIRCULANDO OESTE * <i>Circling West</i>	ALTN <i>Alternate Minimums</i>			
	MDA 780' (428')					
A		960' (505') 1.6 Km	(800')	3.2 Km		
B	1.6 Km	1300' (845') 2.0 Km	(845')			
C		(845') 4.0 Km		4.0 Km		
D	2.4 Km	1460' (1005') 4.8 Km	(1005')	4.8 Km		
* CAT C-D NA de noche / <i>Cat C-D not authorized at night</i>						
Veloc. Terrestre Kts	70	90	100	120	140	160

DASA / SECCION AIS-WAY