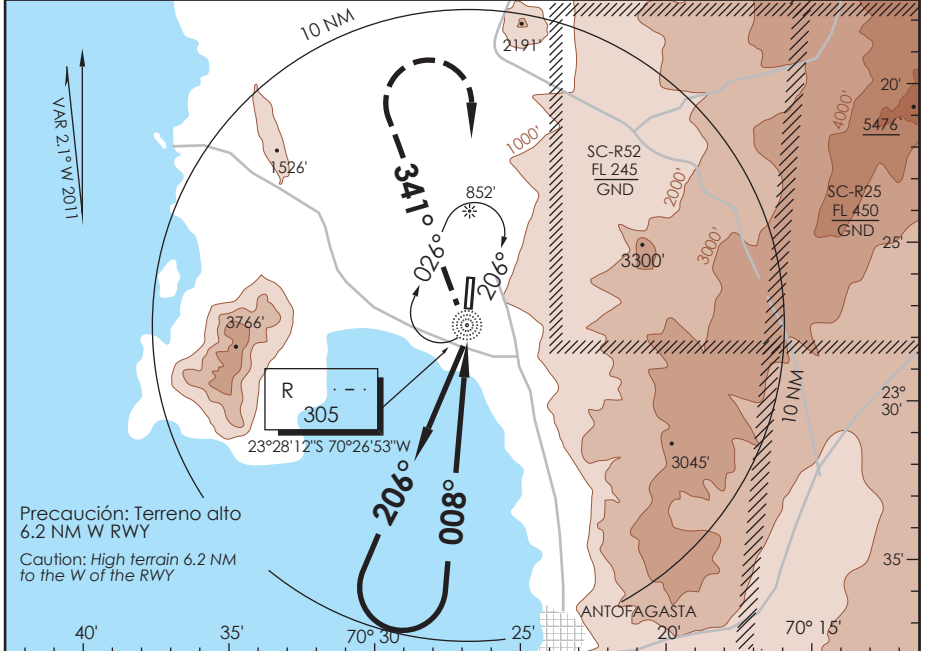


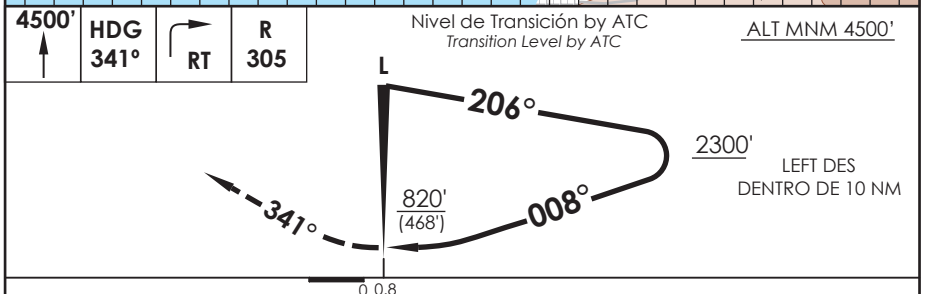
AP. CERRO MORENO ANTOFAGASTA - CHILE

SCFA IAC 6
NDB Rwy 01

APP ANTOFAGASTA RADAR Antofagasta Approach 120.9 / 119.3		TORRE ANTOFAGASTA Antofagasta Tower 118.1		CONTROL TERRESTRE Ground Control 121.9	
L "R" 305	FINAL APCH CRS 008°	WO FAF	MDA(H) 820' (468')	AD Elev. THR 01 Elev 455'	7200 FT MSA 25 NM R
APCH FRUSTRADA: Ascenso a 4500' HDG 341°, viraje derecha directo L "R", luego según autorización ATC. Missed Apch: Climb to 4500' on HDG 341°, right turn direct to "R" L, then according to ATC clearance.					



Precaución: Terreno alto
6.2 NM W RWY
Caution: High terrain 6.2 NM
to the W of the RWY



Categoría	DIRECTO RWY 01 <i>Straight in RWY 01</i>		CIRCULANDO OESTE * Circling West	ALTN Alternate Minimums	
	MDA 820' (468')				
A			960' (505')	1.6 Km	(800')
B	1.6 Km		1300'	2.0 Km	(845')
C			(845')	4.0 Km	4.0 Km
D	2.4 Km		1460' (1005')	4.8 Km	(1005') 4.8 Km

* CAT C-D NA de noche / Cat C-D not authorized at night

Veloc. Terrestre Kts	70	90	100	120	140	160

DASA / SECCION AIS-WAY