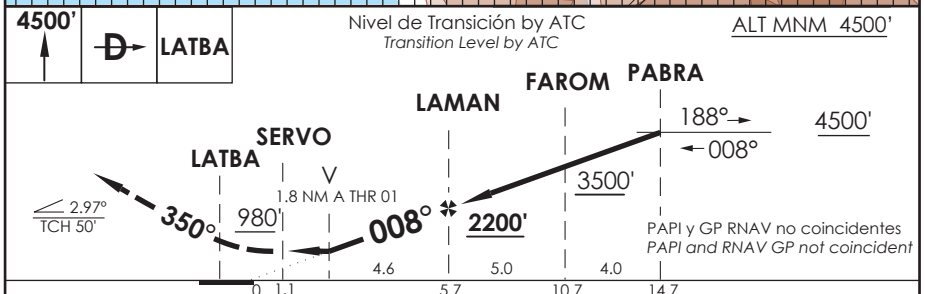
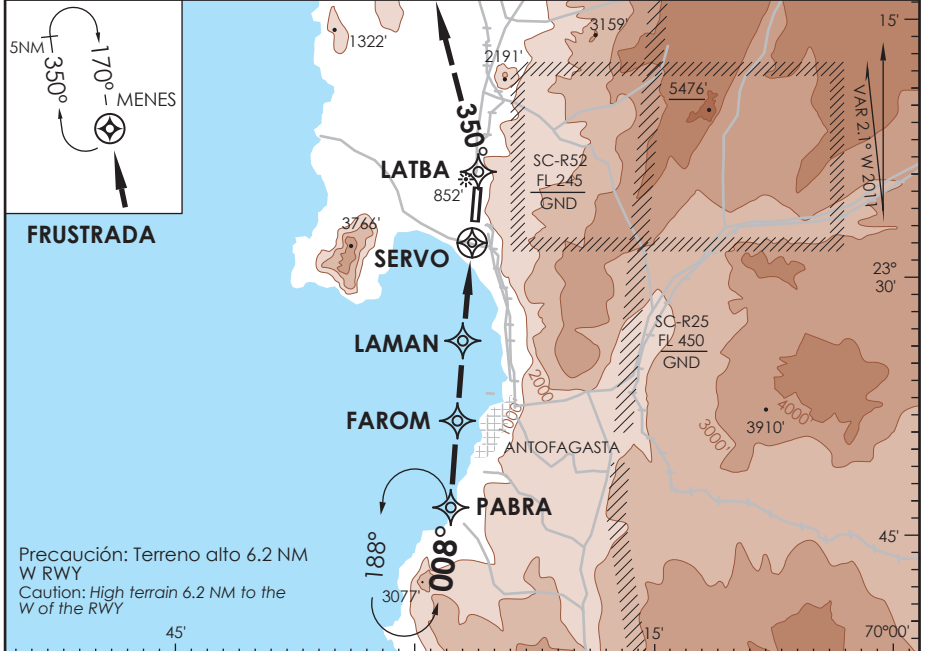


AP. CERRO MORENO ANTOFAGASTA - CHILE

SCFA IAC 7
RNAV (GNSS) Rwy 01

APP ANTOFAGASTA RADAR Antofagasta Approach	120.9 / 119.3	TORRE ANTOFAGASTA Antofagasta Tower	118.1	CONTROL TERRESTRE Ground Control	121.9
RNAV	FINAL APCH CRS 008°	MNM ALT LAMAN 2200' (1848')	LNAV MDA(H) 980' (628')	AD Elev. THR 01 Elev 455'	352'
APCH FRUSTRADA: Ascenso 4500' directo LATBA - MENES, ingreso HLDG 170° derecho o según autorización ATC.					7200 FT
Missed Apch: Climb to 4500' direct LATBA direct MENES, enter on HLDG 170° right or according to ATC clearance.					
					MSA 25 NM SERVO



CATEGORÍA	DIRECTO RWY 01	Straight in RWY 01	CIRCULANDO OESTE *	ALTN
	LNAV MDA	980' (628')	Circling West	Alternate Minimums
A	2.0 Km	980' (525')	2.0 Km	NA
B	2.8 Km	1300' (845')	4.0 Km	
C	3.2 Km	1460' (1005')	4.8 Km	
D				
- AUTH de acuerdo a DAN 06-21 - Authorization according to DAN 06-21			* CAT C-D NA de noche * Cat C-D not authorized at night	

DASA / SECCION AIS-WAY