
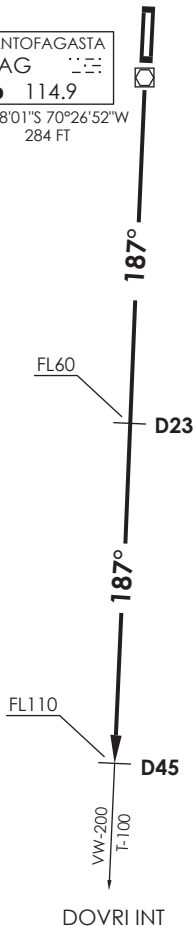


VAR 2.1° W 2011

ANTOFAGASTA
 FAG 
 D 114.9
 23°28'01"S 70°26'52"W
 284 FT

ANTOFAGASTA

GNDC 121.9
 TWR 118.1
 RDR 120.9 / 119.3



MNM Razón ASC:
 MNM Climb Rate:
 250 FT/NM TIL FL110

Altitud de Transición 4500FT
 Transition Altitude 4500FT

No se ajusta a escala / Not to scale

LAPOR 1

DEP RWY 19: Ascender en R187 FAG VOR/DME, cruzar D23 FL60 o superior, cruzar D45 FL110 o superior para interceptar AWY, luego según autorización ATC.

TAKE-OFF RWY 19: Climb on R187 FAG VOR/DME, cruzar D23 at or above FL60, cross D45 at or above FL110 to intercept AWY, then according to ATC clearance.

DASA / SECCION AIS-MAP