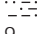


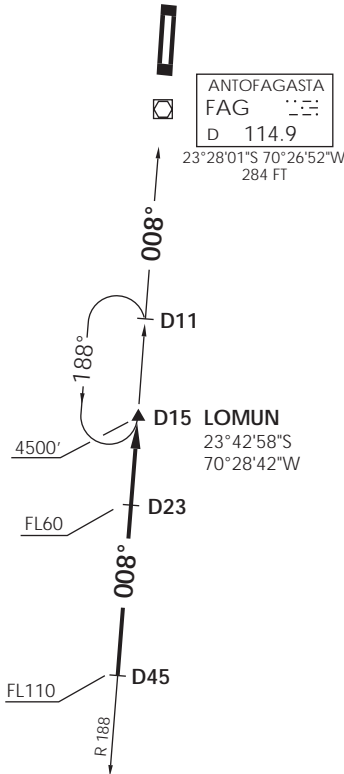


**ANTOFAGASTA**

RDR 120.9 / 119.3  
 TWR 118.1

ANTOFAGASTA  
 FAG   
 D 114.9

23°28'01"S 70°26'52"W  
 284 FT



Nivel de Transición by ATC  
 Transition Level by ATC

No se ajusta a escala / Not to scale

**STAR LOMUN 1**

Establecido en R188 (TR008°) FAG VOR/DME, cruzar D45 S FAG FL110 o superior, D23 S FL60 o superior, LOMUN INT 4500FT o superior, luego según autorización ATC.

*Established on R188 (TR008°) FAG VOR/DME, cross D45 S FAG at or above FL110, D23 S at or above FL60, LOMUN INT at or above 4500FT, then according to ATC clearance.*