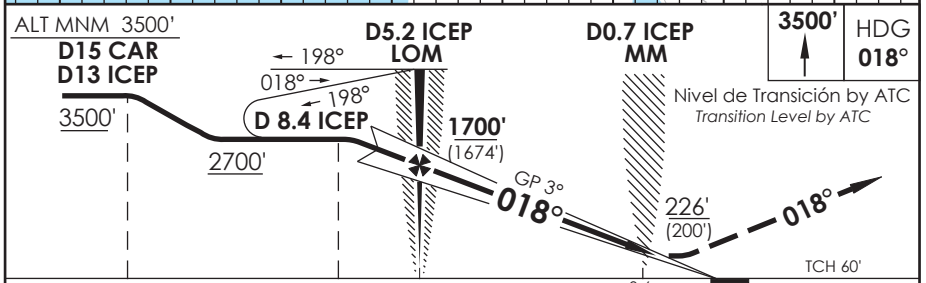
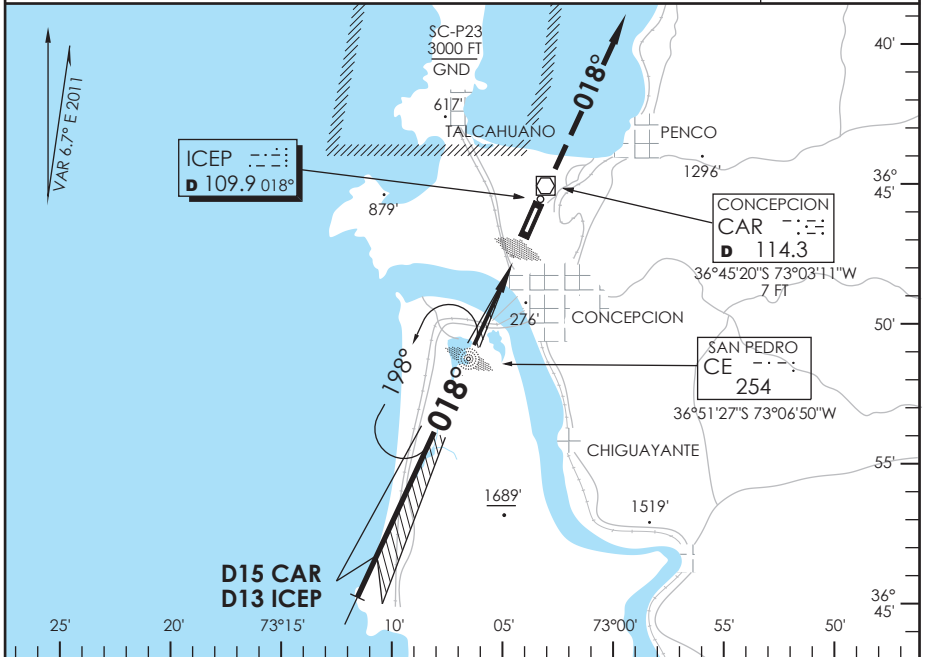


AD. CARRIEL SUR (INTL O/R) CONCEPCION - CHILE

SCIE IAC 1
ILS Z RWY 02

APP CONCEPCION Concepción Approach		120.5	TORRE CONCEPCION Concepción Tower		118.1	CONTROL TERRESTRE Ground Control		121.9
LOC ICEP 109.9	FINAL APCH CRS 018°	GS LOM 1700' (1674')	ILS DA (H) 226' (200')	AD Elev. 26'	THR 02 Elev. 26'	<div style="border: 1px solid black; border-radius: 50%; width: 100px; height: 100px; display: flex; align-items: center; justify-content: center;"> 4300 FT </div> <p>MSA 25 NM CAR</p>		
<p>APCH FRUSTRADA: Ascenso 3500' HDG 018°, luego según autorización ATC. <i>Misled APCH: Climb to 3500' on HDG 018°, then according to ATC clearance.</i></p>								



CATEGORIA	DIRECTO RWY 02				CIRCULANDO OESTE Circling West	ALTN Alternate Minimums	
	ILS		LOC WO GP			1.6 Km	3.2 Km
	DA 226' (200')	WO ALS	MDA 360' (334')	WO ALS			
A	RVR 550m*	1.2 Km	0.8 Km	1.6 Km	560' (534')	(600')	
B	RVR 750m				640'	(614')	
C	o	1.2 Km	1.6 Km	3.2 Km	2.8 Km	(614')	
D	0.8 Km				3.2 Km		

* Ver pagina GEN 2.11 / See page GEN 2.11

Veloc. Terrestre Kts	70	90	100	120	140	160
GP 3° FPM	382'	491'	545'	654'	763'	872'
MIN:SEC (FAF TO MAPt 4.4)	3:46	2:56	2:38	2:12	1:53	1:39

CAMBIO: MNM Circular / VAR
Change: Circling MNM / VAR

DGAC AMDT 71

15 DICIEMBRE 2011

DASA / SECCION AEB-MAP