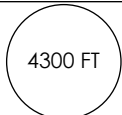
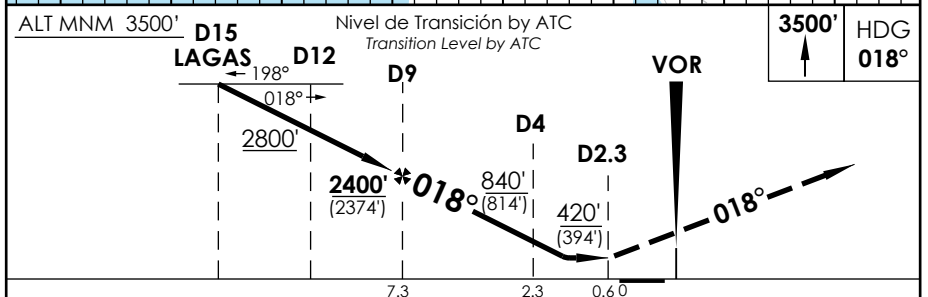
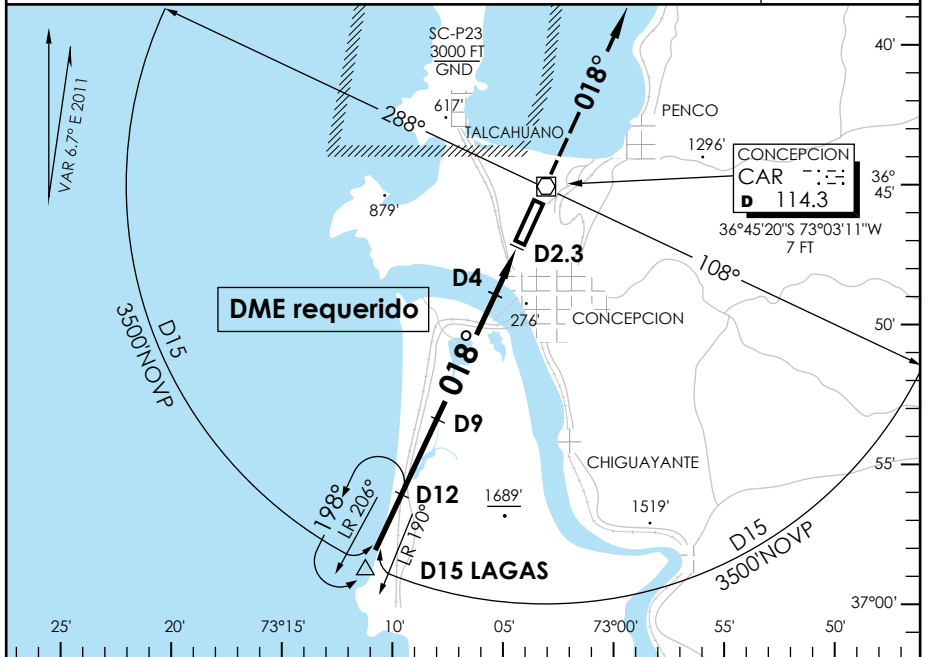


AD CARRIEL SUR (INTL O/R) CONCEPCION - CHILE

SCIE IAC 4
VOR RWY 02

APP CONCEPCION Concepción Approach 120.5		TORRE CONCEPCION Concepción Tower 118.1		CONTROL TERRESTRE Ground Control 121.9	
VOR CAR 114.3	FINAL APCH CRS 018°	MNM ALT D9 2400' (2374)	MDA (H) 420' (394')	AD Elev. THR 02 Elev. 26'	 4300 FT MSA 25 NM CAR
APCH FRUSTRADA: Ascenso 3500' HDG 018° dentro de D15 según autorización ATC. Missed Apch: Climb to 3500' on HDG 018° within D15 according to ATC clearance.					



CATEGORIA	DIRECTO RWY 02 Straight in RWY 02		CIRCULANDO Circling		ALTN Alternate Minimums		
	MDA 420' (394')						
	ALS	WO ALS					
A	1.2 Km	1.6 Km	540' (514)	1.6 Km	(800')	3.2 Km	
B			640' (614)				
C	1.6 Km	2.0 Km	960' (934')	4.4 Km	(934')	4.4 Km	
D			1040' (1014')		4.8 Km		(1014')
Veloc. Terrestre Kts		70	90	100	120	140	160

CAMBIO: MNM Circular / VAR
Change: Circling MNM / VAR

DGAC AMDT 71

15 DICIEMBRE 2011

DASA / SECCION AIS-MAP