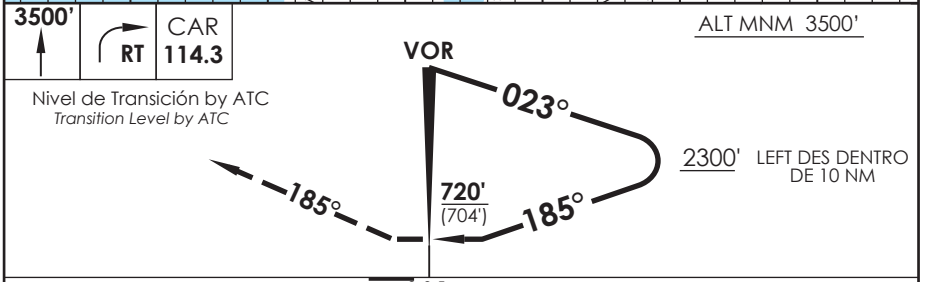


AD. CARRIEL SUR (INTL O/R) CONCEPCION - CHILE

SCIE IAC 5
VOR Y RWY 20

APP CONCEPCION Concepción Approach		120.5	TORRE CONCEPCION Concepción Tower		118.1	CONTROL TERRESTRE Ground Control		121.9
VOR CAR 114.3	FINAL APCH CRS 185°	WO FAF		MDA (H) 720' (704')	AD Elev. THR 20 Elev.	26' 16'		 4300 FT MSA 25 NM CAR
APCH FRUSTRADA: Ascenso 3500' HDG 185°, viraje derecha directo CAR VOR, ingrese a HLDG 023° izquierdo. Missed Apch: Climb to 3500' on HDG 185°, right turn direct to CAR VOR, enter on HLDG 023° left.								



CATEGORIA	DIRECTO RWY 20 <i>Straight in RWY 20 *</i>						CIRCULANDO OESTE Circling West		ALTN Alternate Minimums	
	MDA 720' (704')									
A	1.6 Km						720' (694')	1.6 Km	(800')	3.2 Km
B								3.2 Km		4.0 Km
C	3.2 Km							4.0 Km		
D	4.0 Km									
* Desalineado 14° respecto a RCL / Offset 14° from RWY center line										
Veloc. Terrestre Kts	70	90	100	120	140	160				

DASA / SECCION AER-MAP