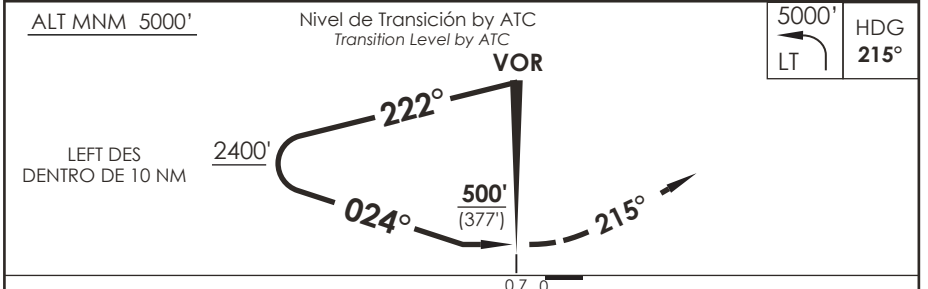
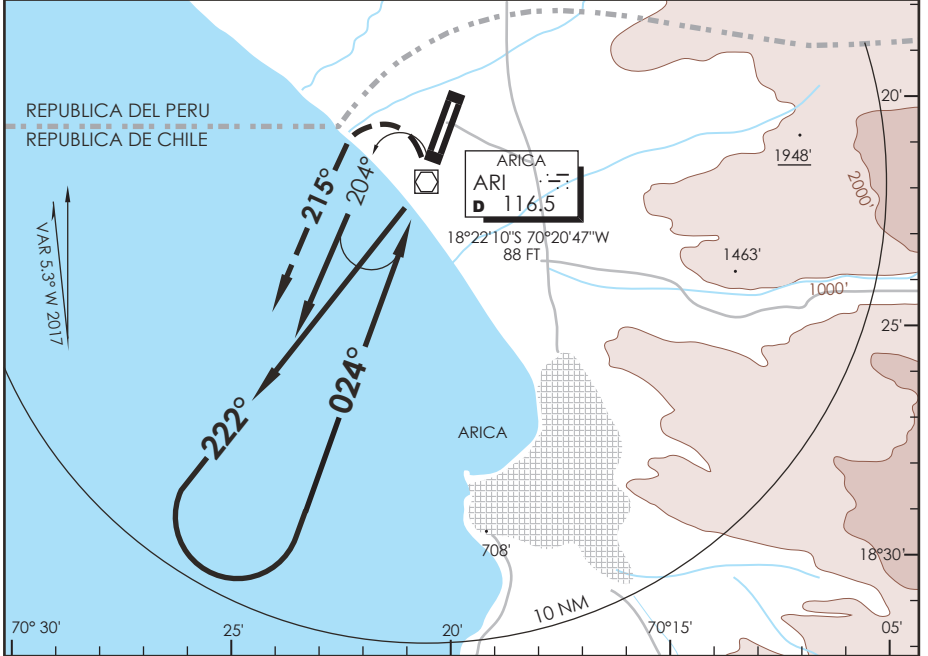


AP. CHACALLUTA  
**ARICA - CHILE**

SCAR IAC 2  
**VOR Y Rwy 02**

APP ARICA Arica Approach	119.9	TORRE ARICA Arica Tower	118.5	CONTROL TERRESTRE Ground Control	121.9
VOR ARI <b>116.5</b>	FINAL APCH CRS <b>024°</b>	<b>WO FAF</b>	MDA (H) <b>500' (377')</b>	AD Elev <b>166'</b> THR 02 Elev <b>123'</b>	11000 FT MSA 25 NM ARI
APCH FRUSTRADA: Viraje izquierda HDG 215° en ascenso para 5000', luego viraje izquierda directo ARI VOR e ingreso HLDG 024° izquierdo. Missed Apch: Left turn HDG 215° climbing to 5000', then left turn direct to ARI VOR and enter on HLDG 024° left.					



C A T E G O R I A	DIRECTO RWY 02 Straight in RWY 02	CIRCULANDO ESTE Circling East	ALTN Alternate Minimums
	MDA <b>500' (377')</b>		
	A	640' (474')	1.6 Km
	B	960' (794')	
C	1120' (954')	4.8 Km	VER PAG. GEN 2.19
D	1460' (1294')		

DASA / SECCION A6-MAP