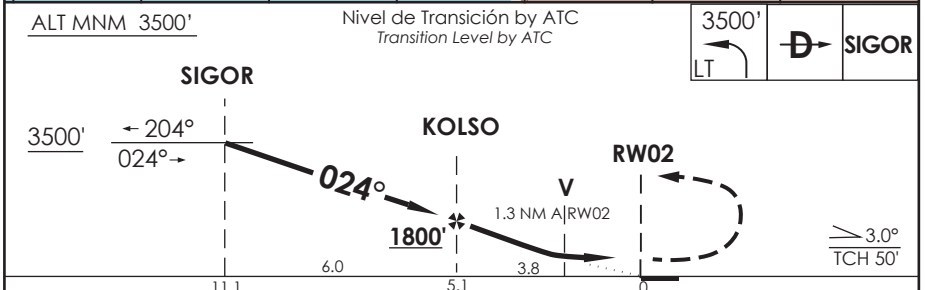
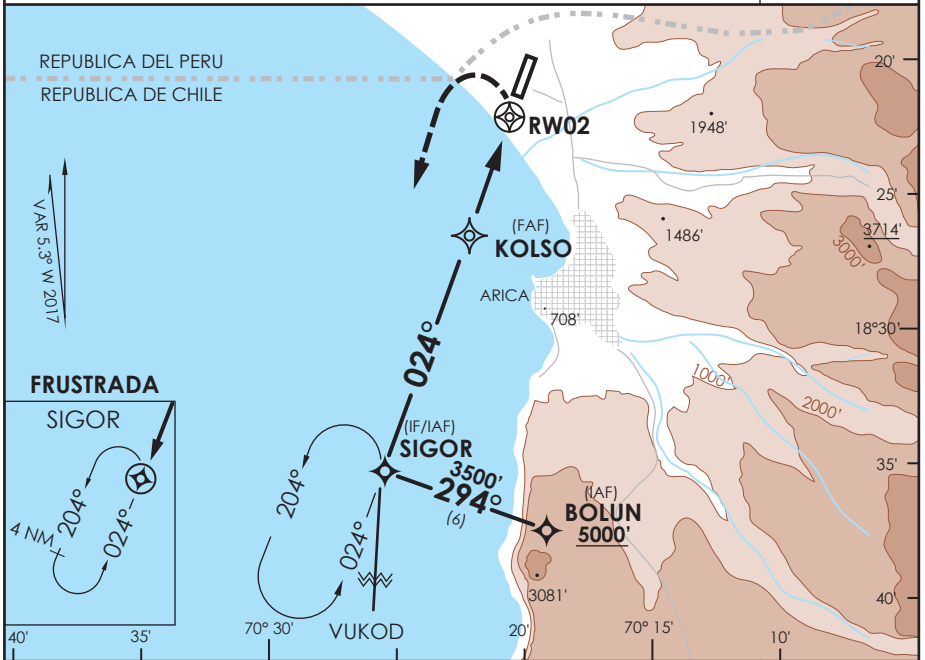


AP. CHACALLUTA  
**ARICA - CHILE**

SCAR IAC 3  
**RNAV (GNSS) Rwy 02**

APP ARICA Arica Approach	119.9	TORRE ARICA Arica Tower	118.5	CONTROL TERRESTRE Ground Control	121.9
<b>RNAV</b>	FINAL APCH CRS <b>024°</b>	MNM ALT KOLSO <b>1800'</b>	LNAV MDA (H) <b>580' (457')</b>	AD Elev THR 02 Elev <b>166'</b> <b>123'</b>	 MSA 25 NM RW02
APCH FRUSTRADA: Viraje izquierda en ascenso para 3500' directo SIGOR Ingrese HLDG 024° izquierdo, luego según autorización ATC. Missed Apch: Left turn climbing to 3500' direct SIGOR, enter on HLDG 024° left, then according to ATC clearance.					



C CATEGORIA	DIRECTO RWY 02 Straight in RWY 02	CIRCULANDO ESTE Circling East	ALTN Alternate Minimums		
	LNAV MDA <b>580' (457')</b>				
	A	1.6 Km	640' (474') 960' (794')	1.6 Km	
	B	2.4 Km	1120' (954') 1460' (1294')	4.8 Km	
C			VER PAG. GEN 2.19		
D					
Requiere aprobación RNP APCH RNP APCH RQRD					
Veloc. Terrestre Kts	80	100	120	140	160
Angulo DES 3.0° FPM	425'	531'	637'	743'	849'
MAPt en RW02					