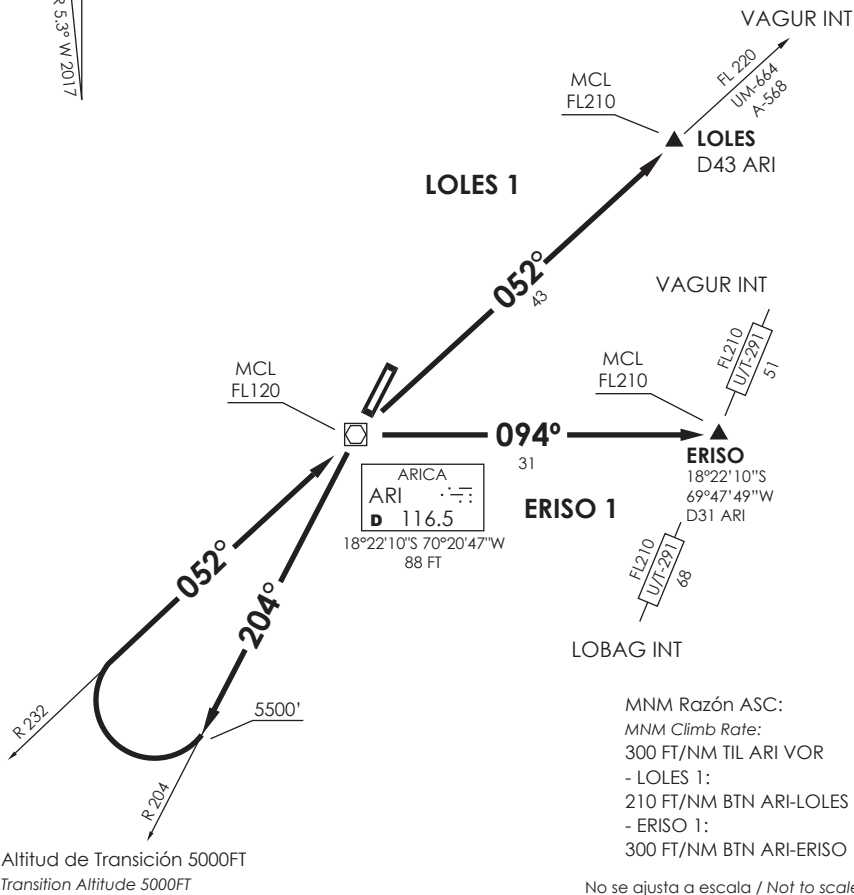


ARICA
 GNDC 121.9
 TWR 118.5
 APP 119.9

VAR 5.3° W 2017



MNM Razón ASC:
 MNM Climb Rate:
 300 FT/NM TIL ARI VOR
 - LOLES 1:
 210 FT/NM BTN ARI-LOLES
 - ERISO 1:
 300 FT/NM BTN ARI-ERISO

No se ajusta a escala / Not to scale

LOLES 1 / ERISO 1

DEP RWY 20: Ascender en R204 ARI VOR/DME hasta 5500FT, viraje derecha para interceptar R232 (TR052°) directo a ARI VOR/DME. Cruzar ARI VOR FL120 o superior.

TAKE-OFF RWY 20: Climb via R204 ARI VOR/DME until 5500FT, right turn to intercept R232 (TR052°), direct to ARI VOR/DME. Cross ARI VOR at or above FL120.

LOLES 1: Interceptar R052 ARI VOR directo a LOLES INT. Cruzar LOLES INT FL210 o superior, luego según autorización ATC.

LOLES 1: Intercept R052 ARI VOR direct to LOLES INT. Cross LOLES INT at or above FL210, then according to ATC clearance.

ERISO 1: Viraje derecha para interceptar R094 ARI VOR directo a ERISO INT. Cruzar ERISO INT FL210 o superior, luego según autorización ATC.

ERISO 1: Right turn to intercept R094 ARI VOR direct to ERISO INT. Cross ERISO INT at or above FL210, then according to ATC clearance.