

CARTA DE LLEGADA NORMALIZADA
VUELO POR INSTRUMENTOS
STANDARD INSTRUMENT ARRIVAL CHART

ARICA - AP CHACALLUTA
SCAR - STAR 4 RNAV Rwy 02
VAGUR 1A / VAGUR 1B

ARICA
GNDC 121.9
TWR 118.5
APP 119.9

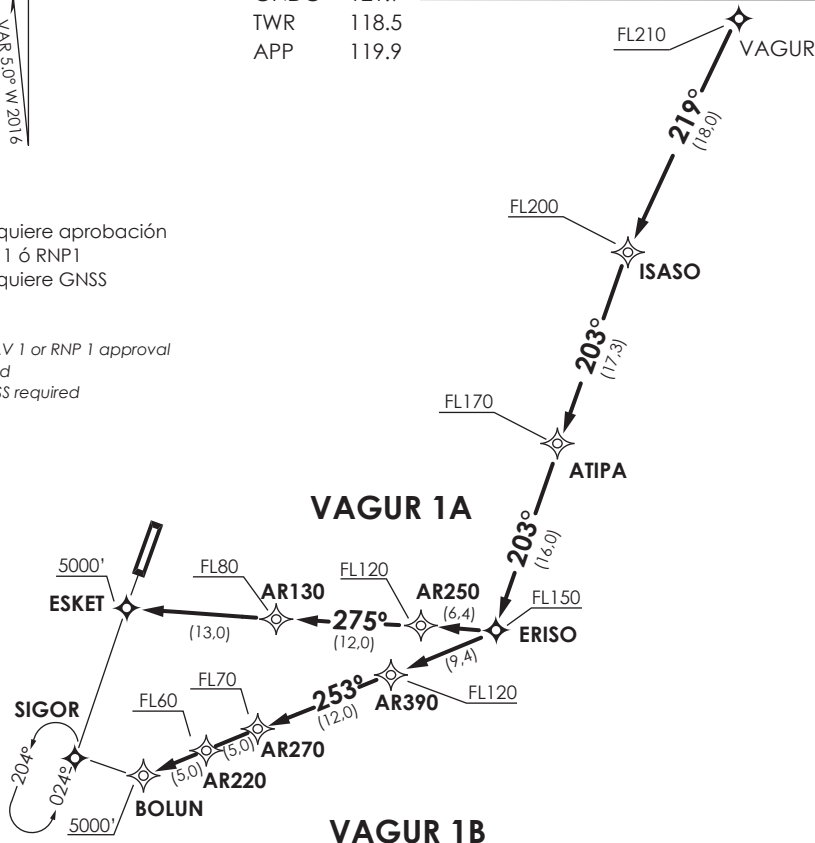


Notas

- 1.- Requiere aprobación RNAV 1 ó RNP1
- 2.- Requiere GNSS

Notes

- 1.- RNAV 1 or RNP 1 approval required
- 2.- GNSS required



Nivel de Transición by ATC
Transition Level by ATC

No se ajusta a escala / Not to scale

STAR VAGUR 1A / VAGUR 1B RNAV

Proceder desde VAGUR directo ISASO, directo ATIPA INT-ERISO INT en descenso. Cruzar VAGUR FL210 o superior, ISASO FL200 o superior, ATIPA FL 170 o superior, ERIso FL150 o superior, posterior...

Proceed from VAGUR direct ASASO, direct ATIPA INT-ERISO INT in descent. Cross VAGUR at or above FL210, ISASO at or above FL200, ATIPA at or above FL170, ERIso at or above FL150, then...

VAGUR 1A: viraje derecha directo a AR250, directo a AR130-ESKET. Cruzar AR250 FL120 o superior, AR130 FL80 o superior, luego según autorización ATC.

VAGUR 1A: right turn direct to AR250, direct to AR130-ESKET. Cross AR250 at or above FL120, AR130 at or above FL80, then according to ATC clearance.

VAGUR 1B: viraje derecha directo a AR390, directo a AR270, directo AR220-BOLUN. Cruzar AR390 FL120 o superior, AR270 FL70 o superior, AR220 FL60 o superior, BOLUN 5000 FT o superior, luego según autorización ATC.

VAGUR 1B: right turn direct to AR390, direct to AR270, direct to AR220-BOLUN. Cross AR390 at or above FL120, AR270 at or above FL70, AR220 at or above FL60, BOLUN at or above 5000FT, then according to ATC clearance.