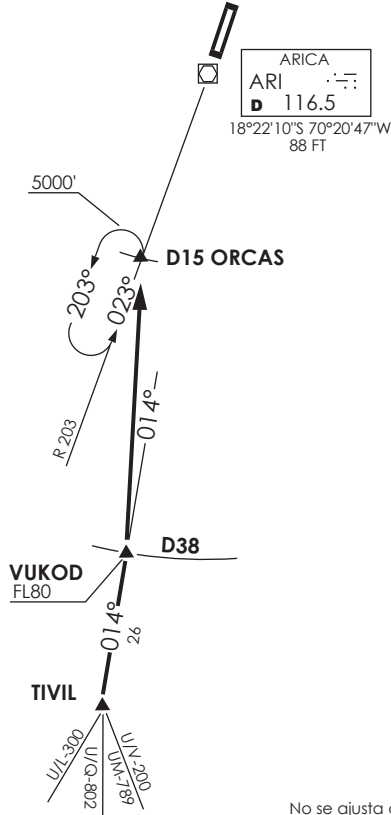


ARICA

APP 119.9
 TWR 118.5

VAR 5.0° W 2016



Nivel de Transición by ATC
 Transition Level by ATC

No se ajusta a escala / Not to scale

STAR TIVIL 1A

En TIVIL INT, abandonar AWY para interceptar R194 (TR014°) ARI VOR/DME directo a VUKOD INT (D38 S ARI VOR/DME). Luego directo a ORCAS INT (D15 S ARI VOR/DME) para interceptar R203 (TR023°). Cruzar VUKOD INT FL80 o superior, cruzar ORCAS a 5000 FT o superior. Luego continuar descenso en curso de aproximación VOR/DME o según autorización ATC.

At TIVIL INT, leave AWY to intercept R194 (TR014°) ARI VOR/DME direct to VUKOD INT (D38 S ARI VOR/DME). Then direct to ORCAS INT (D15 S ARI VOR/DME) to intercept R203 (TR023°). Cross VUKOD INT at or above FL80, cross ORCAS INT at or above 5000 FT. Then continue descent on VOR/DME approach course or according to ATC clearance.

DASA / SECCION AIS-MAP