
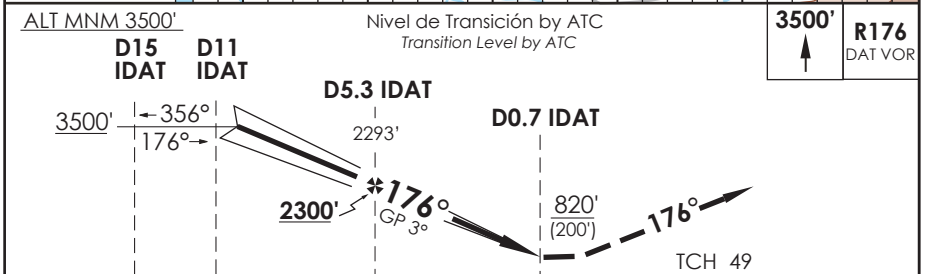
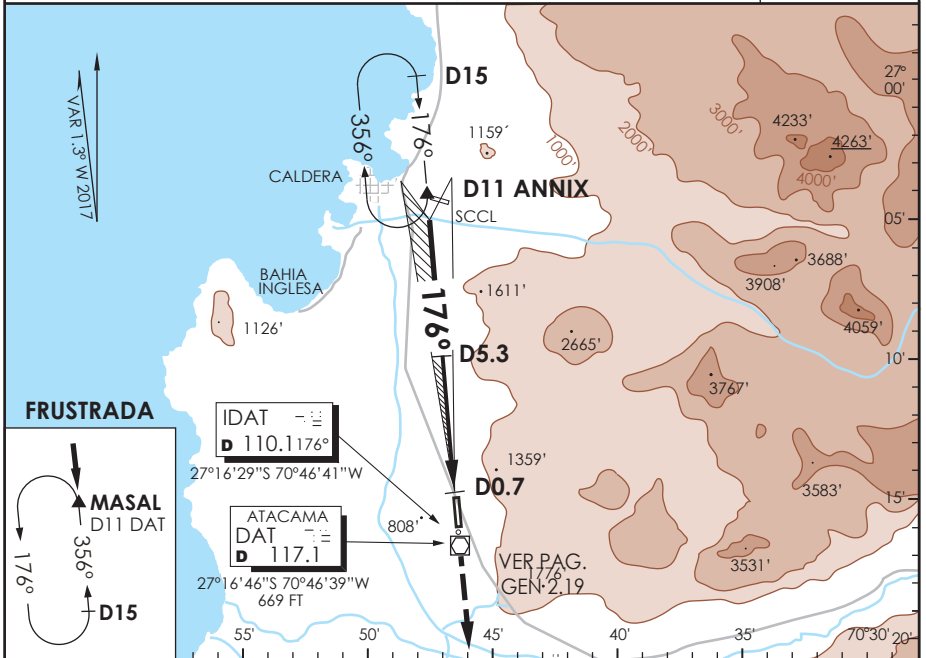


# AD. DESIERTO DE ATACAMA CALDERA - CHILE

SCAT IAC 1  
ILS Rwy 17

ATACAMA APP ATACAMA APPROACH 120.3		TORRE ATACAMA Atacama Tower 118.3		CONTROL TERRESTRE Ground Control 121.6	
LOC IDAT <b>110.1</b>	FINAL APCH CRS <b>176°</b>	MNM ALT D 5.3 <b>2300'</b>	DA(H) <b>820'(200')</b>	AD Elev. <b>670'</b> THR 17 Elev. <b>620'</b>	 7000 FT MSA 25 NM DAT
APCH FRUSTRADA: Ascenso 3500' R176 VOR DAT, ingrese HLDG MASAL 356° izquierdo o según autorización ATC . Missed Apch: Climb to 3500' on R176 DAT VOR, enter on HLDG MASAL 356° left or according to ATC clearance.					



CATEGORIA	DIRECTO RWY 17 <i>Straight in RWY 17</i>				CIRCULANDO OESTE <i>Circling West</i>		ALTN <i>Alternate Minimums</i>
	* ILS DA <b>820' (200')</b>		* LOC WO GP MDA <b>1080' (460')</b>				
	ALSF-1	WO ALSF-1	ALSF-1	WO ALSF-1			
A	RVR 750 m o 0.8 Km	1.2 Km	1.2 Km	1.6 Km	1120'	1.6 Km	VER PAG. GEN 2.19
B			1.6 Km	2.0 Km	(450')	2.4 Km	
C			2.0 Km	2.4 Km	1220' (550')	3.2 Km	
D							
* WO IDAT DME PROC NA / Procedure not authorized without IDAT DME							
Veloc. Terrestre Kts	80	100	120	140	160		
GP 3°	425'	531'	637'	743'	849'		
MAPt en D 0.7 IDAT							

CAMBIO: VAR  
Change: VAR

DGAC AMDT 81

17 AGOSTO 2017

DASA / SECCION AS-MAP