
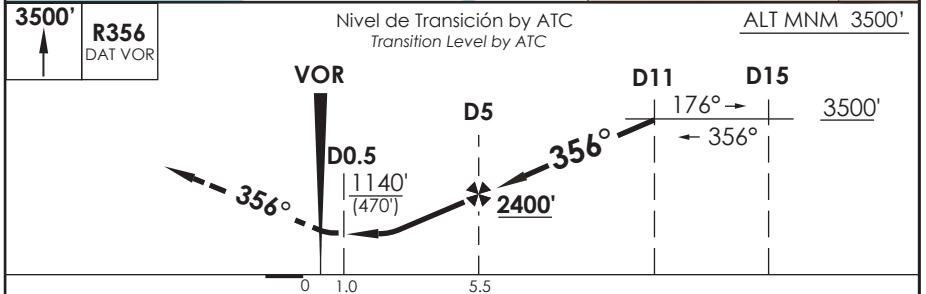
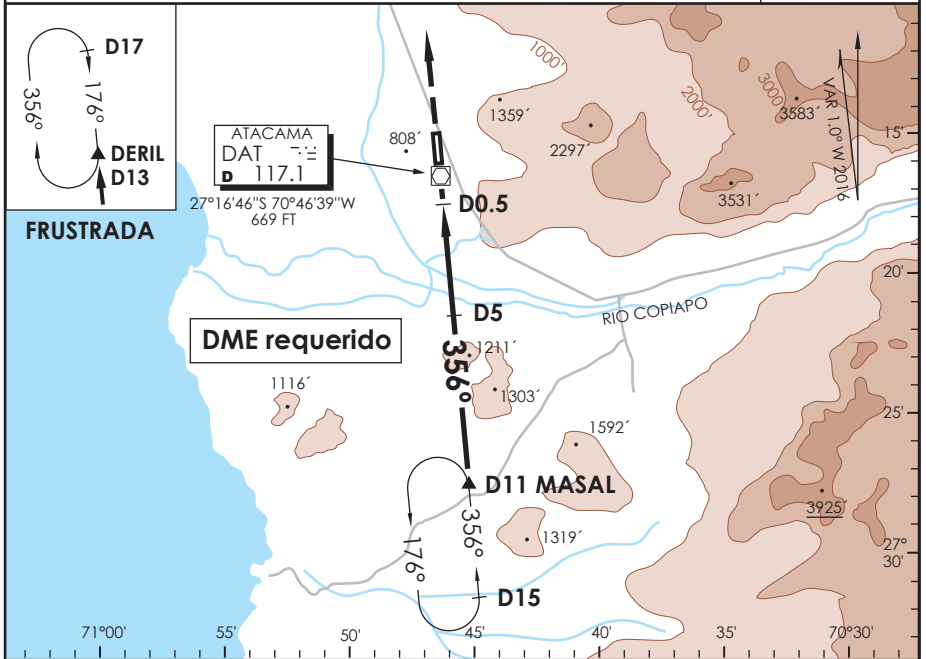


# AD. DESIERTO DE ATACAMA CALDERA - CHILE

SCAT IAC 3  
VOR Rwy 35

ATACAMA APP ATACAMA APPROACH 120.3		TORRE ATACAMA Atacama Tower 118.3		CONTROL TERRESTRE Ground Control 121.6	
VOR DAT <b>117.1</b>	FINAL APCH CRS <b>356°</b>	MNM ALT D5 <b>2400'</b>	MDA <b>1140' (470')</b>	AD Elev. <b>670'</b> THR 35 Elev. <b>670'</b>	 MSA 25 NM DAT
APCH FRUSTRADA: Ascenso 3500' R356 VOR DAT, ingrese HLDG DERIL 176° derecho o según autorización ATC. Missed Apch: Climb to 3500' on R356 DAT VOR, enter on HLDG DERIL 176° right or according to ATC clearance.					



C I R C U L A N D O	DIRECTO RWY 35 <i>Straight in RWY 35</i>		CIRCULANDO OESTE <i>Circling West</i>	ALTN <i>Alternate Minimums</i>
	MDA <b>1140' (470')</b>			
A	1.6 Km		1140' (470')	1.6 Km
B	2.4 Km			(800') 3.2 Km
C			1220' (550')	
D				3.2 Km
Veloc. Terrestre Kts: 80, 100, 120, 140, 160 Angulo DES 2,88° MAPt en D0.5				

DASA / SECCION AS-MAP