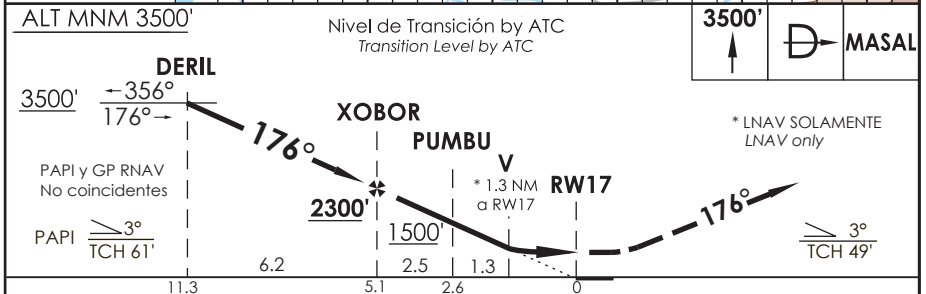
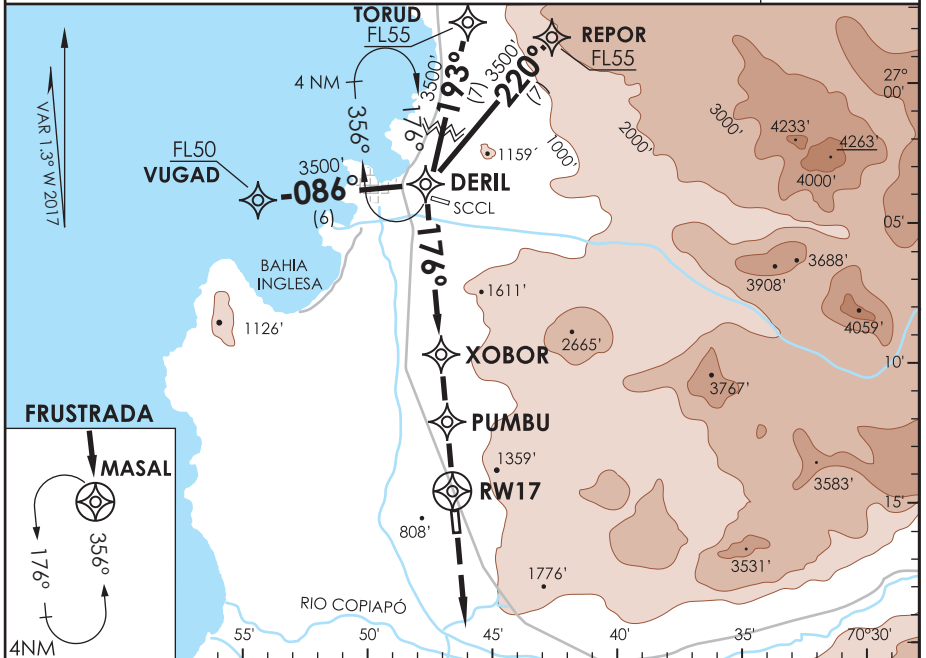


# AD DESIERTO DE ATACAMA CALDERA - CHILE

# SCAT IAC 4 RNAV (GNSS) Rwy 17

ATACAMA APP ATACAMA APPROACH	120.3	TORRE ATACAMA Atacama Tower	118.3	CONTROL TERRESTRE Ground Control	121.6
<b>RNAV</b>	FINAL APCH CRS <b>176°</b>	MNM ALT XOBOR <b>2300'</b>	LNAV/VNAV DA(H) <b>960'(340')</b>	AD Elev. <b>670'</b> THR 17 Elev. <b>620'</b>	7000 FT MSA 25 NM RW17
APCH FRUSTRADA: Ascenso 3500' directo a MASAL, ingrese HLDG 356° izquierdo o según autorización ATC.					
Missed Apch: Climb to 3500' direct to MASAL, enter on HLDG356° left or according to ATC clearance.					



C A T E G O R Í A	DIRECTO RWY 17 <i>Straight in RWY 17</i>				CIRCULANDO <i>Circling</i>	ALTN <i>Alternate Minimums</i>	
	LNAV/VNAV DA <b>960'(340')</b>		LNAV MDA <b>1080'(460')</b>				
	A	1.2 Km	1.6 Km	1.2 Km	1.6 Km	1120'	VER PAG. GEN 2.19
	B			1.6 Km	2.0 Km	(450')	
C	2.4 Km			2.4 Km	1220' (550')		
D	3.2 Km						

-Requiere aprobación RNP APCH. -RNP APCH approval RQRD.					Para sistemas Baro VNAV no compensados proc NA bajo 0°C o sobre 38°C. For uncompensated Baro VNAV systems procedure NA below 0°C or above 38°C.					
Veloc. Terrestre Kts	80	100	120	140	160					
Angulo DES 3,0°	425'	525'	631'	736'	841'					
MAPt en RW17										

DASA / SECCION AISH-MAP