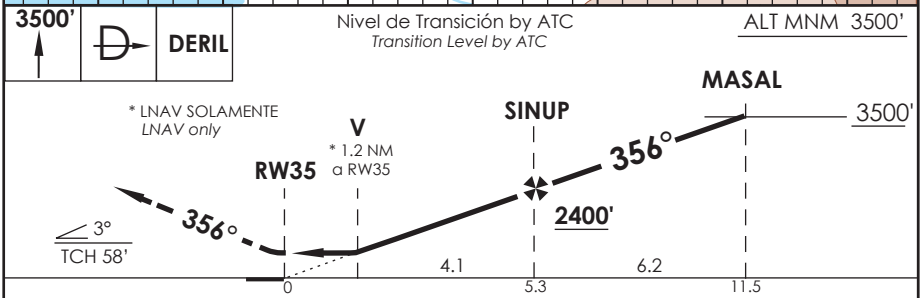
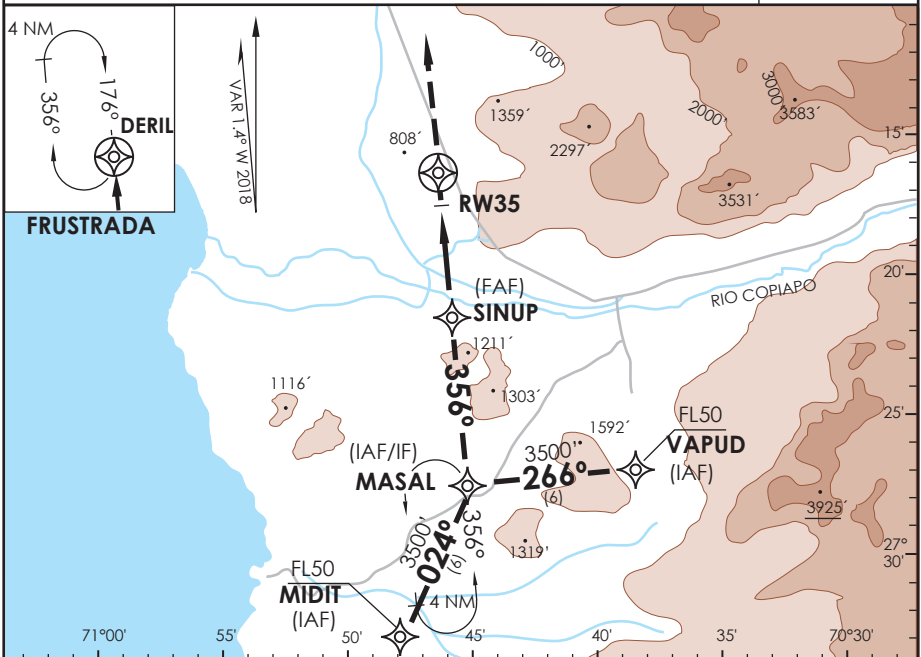


AD DESIERTO DE ATACAMA CALDERA - CHILE

SCAT IAC 5 RNAV (GNSS) Rwy 35

ATACAMA APP ATACAMA APPROACH 120.3		TORRE ATACAMA Atacama Tower 118.3		CONTROL TERRESTRE Ground Control 121.6	
RNAV	FINAL APCH CRS 356°	MNM ALT SINUP 2400'	LNAV/VNAV DA (H) 1100'(430')	AD Elev. 670' THR 35 Elev. 670'	7000 FT MSA 25 NM RW35
APCH FRUSTRADA: Ascenso 3500' directo a DERIL, ingrese HLDG 176° derecho o según autorización ATC. Missed Apch: Climb to 3500' direct to DERIL, enter on HLDG 176° right or according to ATC clearance.					



C A T A	DIRECTO RWY 35 <i>Straight in RWY 35</i>		CIRCULANDO OESTE <i>Circling west</i>	ALTN <i>Alternate Minimums</i>
	LNAV/VNAV DA 1100'(430')	LNAV MDA 1100'(430')		
A	1.6 Km	1.6 Km	1120' (450')	VER PAG. GEN 2.19
B				
C	2.0 Km	2.0 Km	1220' (550')	
D				

-Requiere aprobación RNP APCH. -RNP APCH approval RQRD.					Para sistemas Baro VNAV no compensados proc NA bajo 0°C o sobre 39°C. For uncompensated Baro VNAV systems procedure NA below 0°C or above 39°C.				
Veloc. Terrestre Kts	80	100	120	140	160				
Angulo DES 3,0°	425'	525'	631'	736'	841'				
MAPt en RW35									

CAMBIO: CIRCULANDO W / VAR
Change: Circling W/ VAR

DGAC NOTAM C1161/18

13 ABRIL 2018

DASA /SECCION AB-MAP