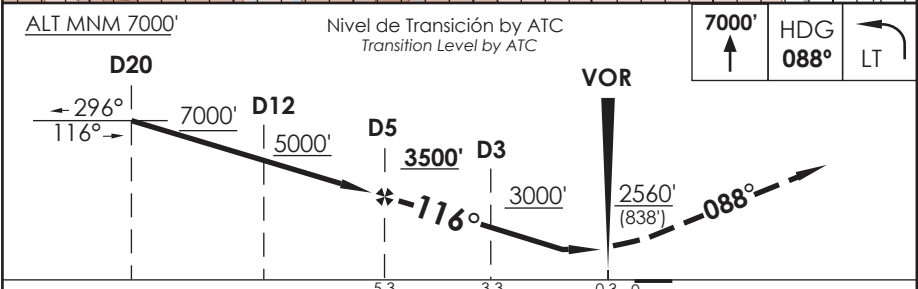
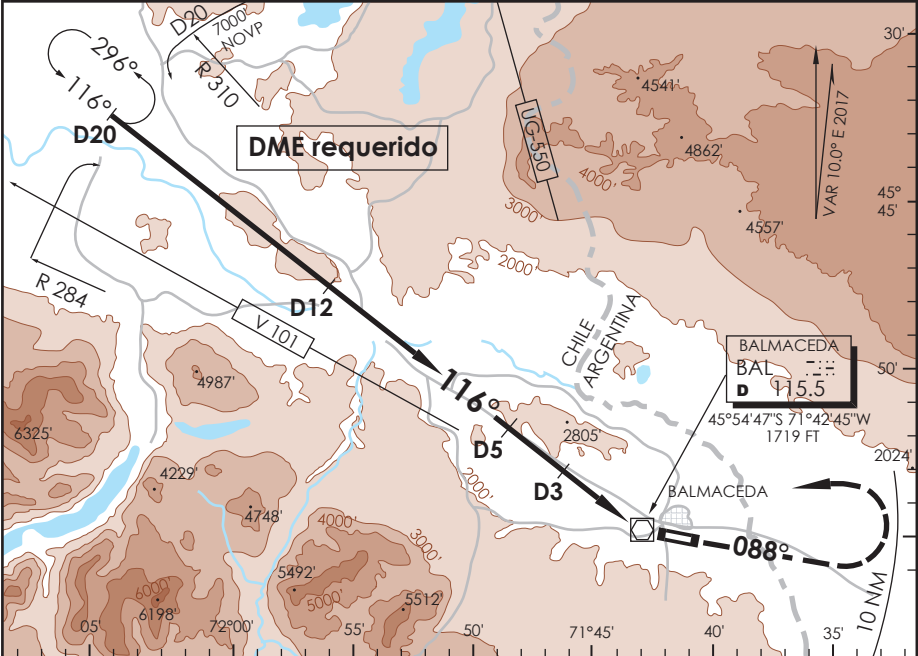


# AD. BALMACEDA BALMACEDA - CHILE

SCBA IAC 1  
VOR Rwy 09

APP PUERTO MONTI RADAR Puerto Montt Approach		128.3 / 119.7	TORRE BALMACEDA Balmaceda Tower	118.5	CONTROL TERRESTRE Ground Control	121.9
VOR BAL <b>115.5</b>	FINAL APCH CRS <b>116°</b>	MNM ALT D5 <b>3500'</b>	MDA(H) <b>2560' (838')</b>	AD Elev <b>1722'</b>	THR 09 Elev <b>1722'</b>	 MSA 25 NM BAL
APCH FRUSTRADA: Ascenso 7000' HDG 088° dentro de 10 NM, viraje izquierda directo VOR BAL, luego según autorización ATC. Missed Apch: Climb to 7000' on HDG 088° within 10 NM, left turn direct to BAL VOR, then according to ATC clearance.						



C R O M E N T A	DIRECTO RWY 09 <i>Straight in RWY 09 *</i>		CIRCULANDO Circling	ALTN Alternate Minimums
	MDA <b>2560' (838')</b>			
A	1.6 Km		N A	VER PAG. GEN 2.19
B	2.0 Km			

\* Desalineado 26° respecto a RCL  
 \* Offset 26° from RWY center line

Veloc. Terrestre Kts	80	100	120	140	160
Angulo DES 3.5° fm D3	496'	619'	743'	867'	991'
Dist. FAF a MAPT 5 NM	3:45	3:00	2:30	2:09	1:53

DASA / SECCION AIS-MAP