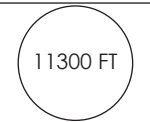
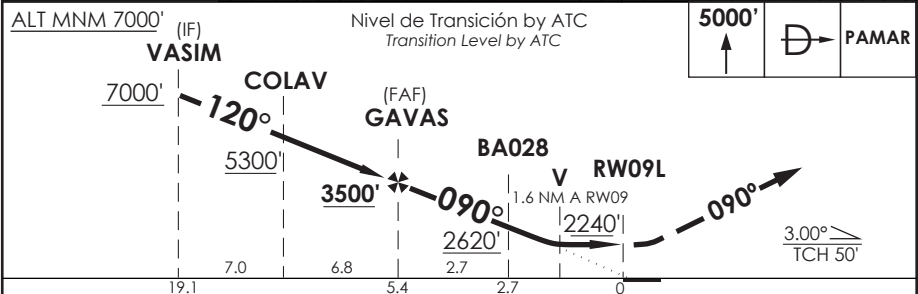
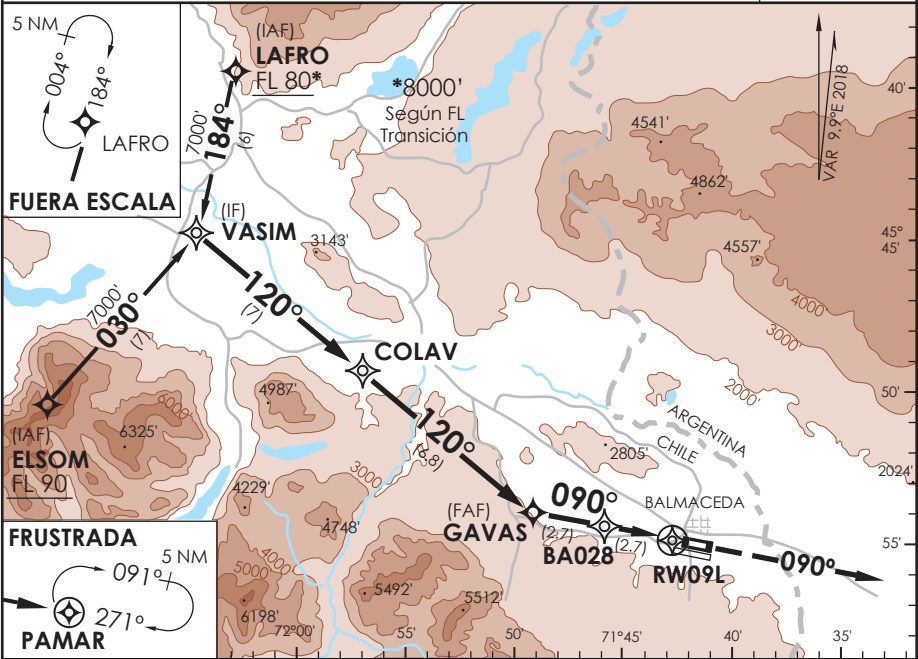


BALMACEDA - CHILE

RNAV (GNSS) Y Rwy 09L

APP PUERTO MONIT RADAR Puerto Montt Approach	128.3 / 119.7	TORRE BALMACEDA Balmaceda Tower	118.5	CONTROL TERRESTRE Ground Control	121.9
RNAV	FINAL APCH CRS 090°	MNM ALT GAVAS 3500'	LNAV MDA(H) 2240' (544')	AD Elev THR 09L Elev 1696'	11300 FT 
APCH FRUSTRADA: Ascenso 5000' directo PAMAR, ingrese a HLDG 091° derecha o según autorización ATC. <i>Misssed Apch: Climb to 5000' direct to PAMAR, enter on HLDG 091° right or according to ATC clearance.</i>					
					MSA 25 NM RW09L



CATEGORIA	DIRECTO RWY 09L <i>Straight in RWY 09L</i>	CIRCULANDO Circling	ALTN Alternate Minimums
	LNAV MDA 2240' (544')		
A	1.6 Km	NA	VER PAG. GEN 2.19
B			
C	2.4 Km		SEE PAGE GEN 2.19
D			

-Requiere aprobación RNP APCH.
-RNP APCH approval RQRD.

Veloc. Terrestre Kts	80	100	120	140	160
Angulo DES 3,0° FPM	425'	531'	637'	743'	849'
MAPt en RW09L					

PROCEDIMIENTOS DE APROXIMACION, SALIDA Y LLEGADA RNAV

Approach, Departure and Arrival RNAV procedures

(Esta información complementa a las cartillas publicadas en la AIP Chile VOL II / This information complements the charts published in the AIP Chile VOL II)

**BALMACEDA / AD BALMACEDA - SCBA
IAC 10 RNAV (GNSS) Y RWY 09L**

NR SERIE	TRANS ID	PATH TERM	PUNTO DE RECORRIDO (WPT)	LAT SEC (SUR)	LONG SEC (WESTE)	FB / FO	COURSE/ TRACK °M/T	DIST. (NM)	TURN DIRECTION	ALTITUD	Rest. Velocidad	VPA/ TCH	PERF. DE NAV
10		IF	VASIM (IF)	45°44'56,02"	72°04'50,07"	FB	-	-	-	7000 FT +	-	-	1,0
15		TF	COLAV (SDF)	45°49'26,76"	71°57'11,30"	FB	120 (130,19)	7,00	-	5300 FT +	-	-	1,0
20		TF	GAVAS (FAF)	45°53'49,33"	71°49'44,32"	FB	120 (130,10)	6,8	-	3500 FT +	-	-	0,3
25		TF	BA028 (SDF)	45°54'17,61"	71°45'57,50"	FB	090 (100,15)	2,68	-	2620 FT +	-	-	0,3
30		TF	RW09L (MAPt)	45°54'46,53"	71°42'03,87"	FO	090 (100,08)	2,76	-	1746 FT +	-	3,0°/50'	0,3
40		CA	-	-	-	-	090 (100,08)	-	-	5000 FT +	-	-	1,0
50		DF	PAMAR (MAHF)	45°56'57,63"	71°24'54,77"	FO	-	-	-	5000 FT +	-	-	1,0
60		HM	PAMAR (MAHF)	45°56'57,63"	71°24'54,77"	FB	271 (280,55)	5,00	-	5000 FT +	-	-	1,0
10	LAFRO	IF	LAFRO (IAF)	45°39'06,52"	72°02'47,39"	FB	-	-	LT	FL 80 +	-	-	1,0
20	LAFRO	TF	VASIM (IF)	45°44'56,02"	72°04'50,07"	FB	184 (193,71)	6,00	-	7000 FT +	-	-	1,0
10	ELSOM	IF	ELSOM (IAF)	45°50'17,45"	72°11'16,30"	FB	-	-	RT	FL 90 +	-	-	1,0
20	ELSOM	TF	VASIM (IF)	45°44'56,02"	72°04'50,07"	FB	030 (040,09)	7,00	-	7000 FT +	-	-	1,0