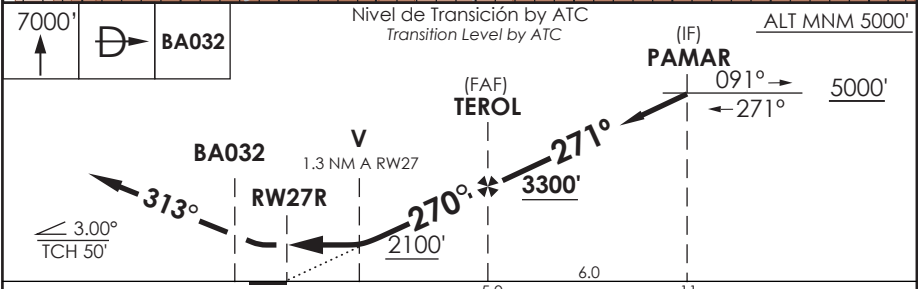
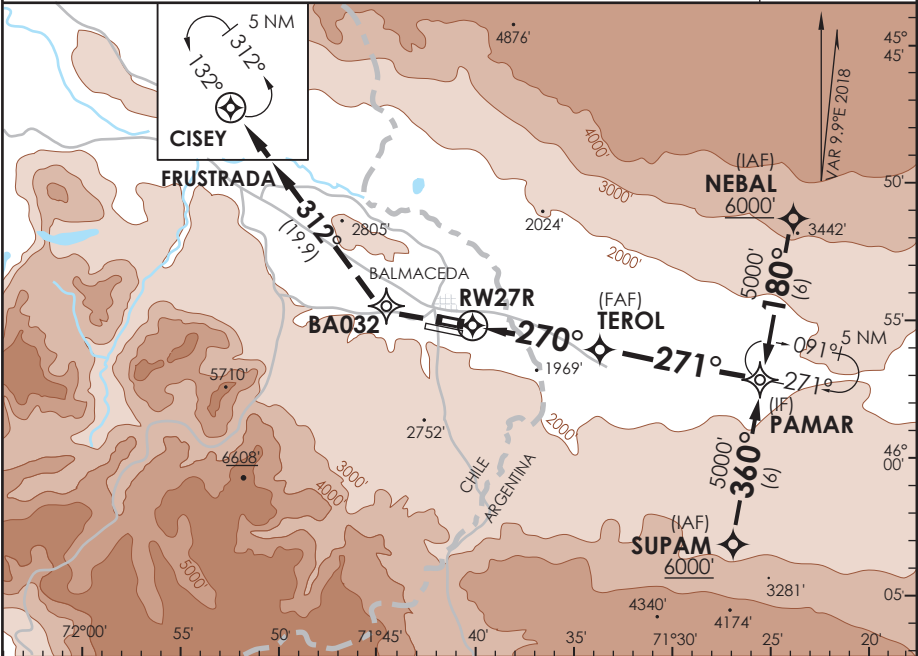


AD. BALMACEDA
BALMACEDA - CHILE

SCBA IAC 11
RNAV (GNSS) Y Rwy 27R

APP PUERTO MONIT RADAR Puerto Monit Approach	128.3 / 119.7	TORRE BALMACEDA Balmaceda Tower	118.5	CONTROL TERRESTRE Ground Control	121.9
RNAV	FINAL APCH CRS 270°	MNM ALT TEROL 3300'	LNAV MDA(H) 2100' (454')	AD Elev THR 27R Elev 1646'	11300 FT
APCH FRUSTRADA: Ascenso 7000' directo BA032 directo CISEY, ingrese a HLDG 132° izquierdo o según autorización ATC. Missed Apch: Climb to 7000' direct to BA032 then to Cisey, enter on HLDG 132° left or according to ATC clearance.					
					MSA 25 NM RW27R



C A T E G O R Í A	DIRECTO RWY 27R <i>Straight in RWY 27R</i>	CIRCULANDO <i>Circling</i>	ALTN <i>Alternate Minimums</i>
	LNAV MDA 2100' (454')		VER PAG. GEN 2.19
A	1.6 Km	NA	SEE PAGE GEN 2.19
B			
C			
D			

-Requiere aprobación RNP APCH.
 -RNP APCH approval RQRD.

Veloc. Terrestre Kts	80	100	120	140	160
Angulo DES 3.0° FPM	425'	531'	637'	743'	849'
MAPt en RW27					

DASA / SECCION AS-MAP

PROCEDIMIENTOS DE APROXIMACION, SALIDA Y LLEGADA RNAV

Approach, Departure and Arrival RNAV procedures

(Esta información complementa a las cartillas publicadas en la AIP Chile VOL II / This information complements the charts published in the AIP Chile VOL II)

**BALMACEDA / AD BALMACEDA - SCBA
IAC 11 RNAV (GNSS) Y RWY 27R**

NR SERIE	TRANS ID	PATH TERM	PUNTO DE RECORRIDO (WPT)	LAT SEC (SUR)	LONG SEC (WESTE)	FB / FO	COURSE/ TRACK °M/T	DIST. (NM)	TURN DIRECTION	ALTITUD	Rest. Velocidad	VPA/ TCH	PERF.DE NAV
10		IF	PAMAR (IAF / IF)	45°56'57,63"	71°24'54,77"	FB	-	-	-	5000 FT +	-	-	1,0
20		TF	TEROL (FAF)	45°55'51,34"	71°33'22,67"	FB	271 (280,55)	6,01	-	3300 FT +	-	-	0,3
30		TF	RW27R (MAPt)	45°54'58,89"	71°40'23,36"	FO	270 (280,09)	4,97	-	1696 FT+	-	3,0°/50'	0,3
50		TF	BA032 (MATF)	45°54'24,95"	71°44'57,37"	FB	270 (280,03)	3,24	-	7000 FT+	-	-	1,0
60		TF	CISEY (MAHF)	45°38'31,25"	72°02'08,16"	FO	313 (322,80)	19,93	-	7000 FT +	-	-	1,0
70		HM	CISEY (MAHF)	45°38'31,25"	72°02'08,16"	FB	133 (143,20)	5,00	-	7000 FT +	-	-	
10	NEBAL	TF	NEBAL (IAF)	45°51'02,96"	71°23'27,20"	FB	-	-	-	6000 FT +	-	-	1,0
20	NEBAL	TF	PAMAR (IAF / IF)	45°56'57,63"	71°24'54,77"	FB	180 (189,77)	6,00	LT	5000 FT +	-	-	1,0
10	SUPAM	TF	SUPAM (IAF)	46°02'52,28"	71°26'22,66"	FB	-	-	-	6000 FT +	-	-	1,0
20	SUPAM	TF	PAMAR (IAF / IF)	45°56'57,63"	71°24'54,77"	FB	360 (009,81)	6,00	RT	5000 FT +	-	-	1,0