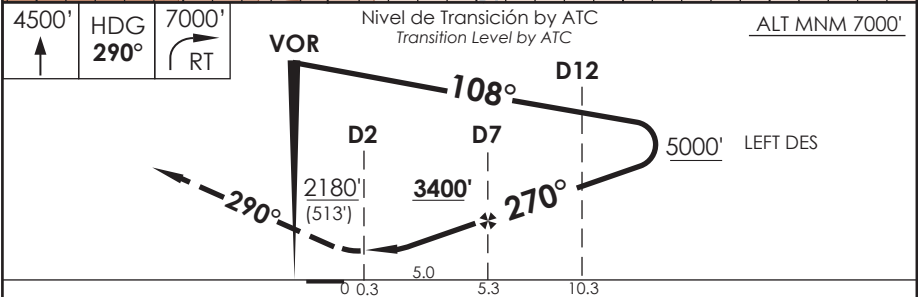
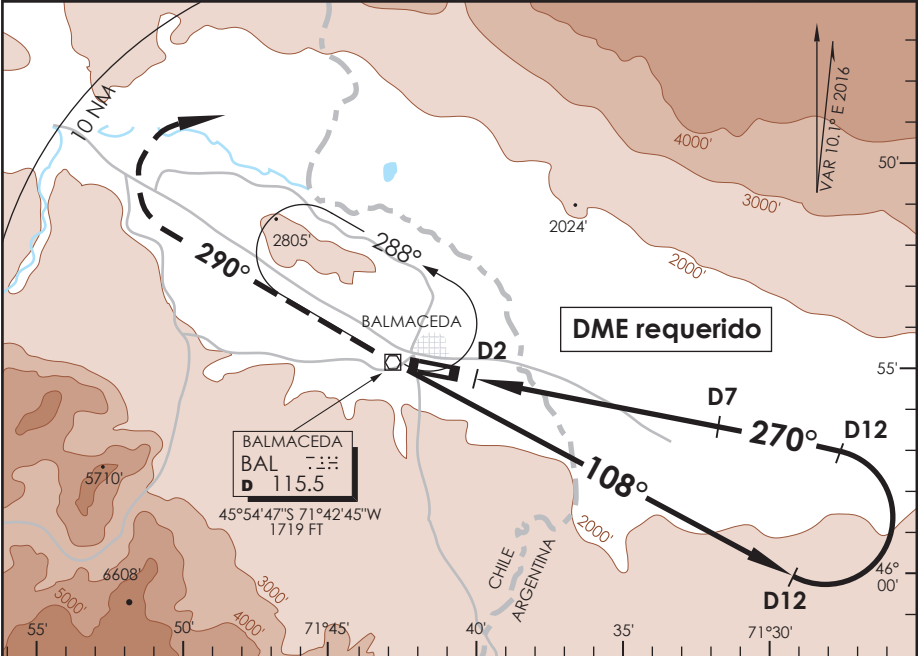


AD. BALMACEDA
BALMACEDA - CHILE

SCBA IAC 2
VOR Rwy 27

APP PUERTO MONTI RADAR Puerto Montt Approach		128.3 / 119.7	TORRE BALMACEDA Balmaceda Tower		118.5	CONTROL TERRESTRE Ground Control		121.9
VOR BAL 115.5	FINAL APCH CRS 270°	MNM ALT D7 3400'	MDA(H) 2180'(513')		AD Elev THR 27 Elev	1722' 1667'		11300 FT MSA 25 NM BAL
APCH FRUSTRADA: Ascenso 4500' HDG 290° dentro de 10 NM, viraje derecha directo BAL VOR, ascenso 7000 Ft según autorización ATC. Missed Apch: Climb to 4500' on HDG 290° within 10 NM, right turn direct to BAL VOR, climb to 7000' according to ATC clearance.								



C R O M E N T E	DIRECTO RWY 27 <i>Straight in RWY 27</i>		CIRCULANDO Circling	ALTN Alternate Minimums
	MDA 2180' (513')			
A	1.2 Km	1.6 Km	N A	(800') 3.2 Km
B	1.6 Km	2.4 Km		
C				
D				

Veloc. Terrestre Kts	80	100	120	140	160
Angulo DES 3.0° FPM	427'	531'	637'	743'	849'
FAF to MAP 5.0 NM	3:45	3:00	2:30	2:08	1:52

DASA / SECCION ASMAP