

# AD. BALMACEDA BALMACEDA - CHILE

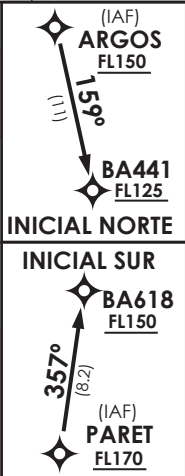
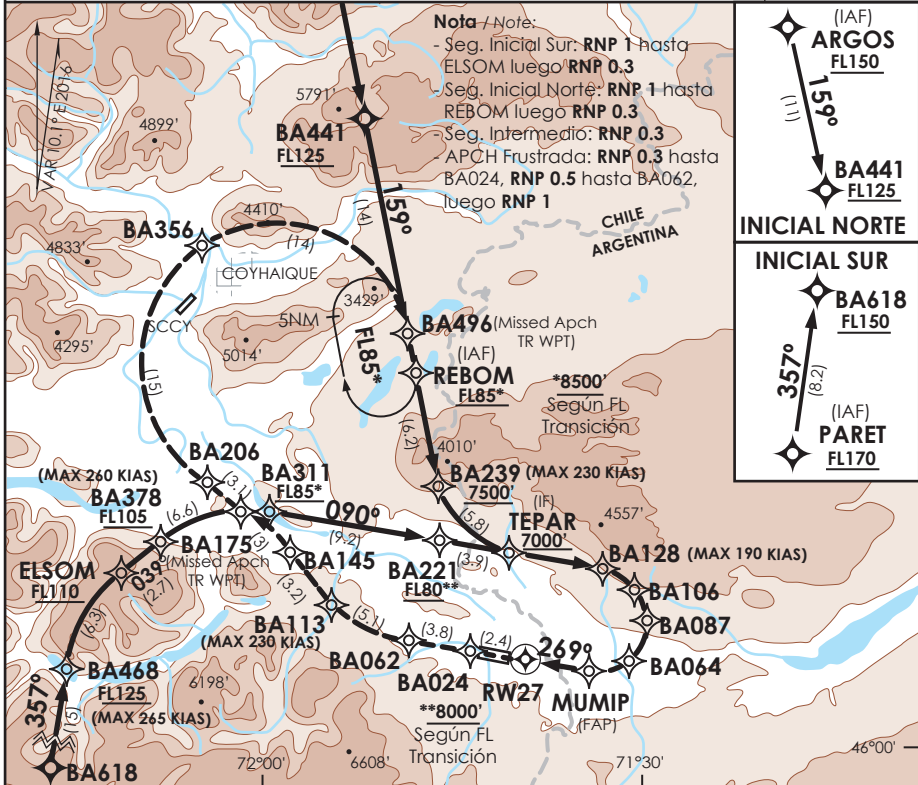
SCBA IAC 6  
RNAV (RNP) Z Rwy 27

APP PTO. MONTT RADAR Puerto Montt Approach	128.3 / 119.7	TORRE BALMACEDA Balmaceda Tower	118.5	CONTROL TERRESTRE Ground Control	121.9
---	---------------	------------------------------------	-------	-------------------------------------	-------

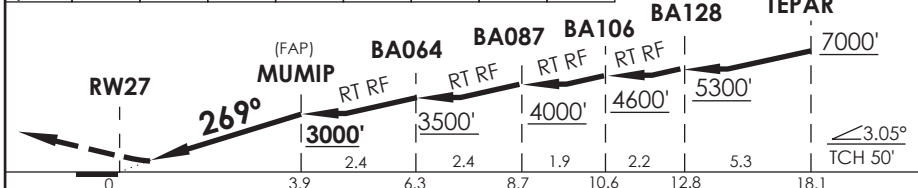
RNAV	FINAL APCH CRS <b>269</b>	MNM ALT MUMIP <b>3000'</b>	DA/H ver mínimos DA/H refer to minimums	AD Elev. 1722' THR 27 Elev. <b>1667'</b>	 11300 FT
------	------------------------------	-------------------------------	--	---	---

APCH FRUSTRADA: Ascenso en TR269° hacia BA024, para continuar en la trayectoria RNP hacia BA496 - REBOM FL085 e ingresar en HLDG.  
Missed Apch: Climb on TR269° to BA024, and then continue on RNP track to BA496 - REBOM FL085, and enter on HLDG.

MSA 25 NM RW27



BA024	BA062	BA113	BA145	BA175	BA206	BA356	BA496	FL085	Nivel de Transición by ATC Transition Level by ATC (IF)
TR269°		RT RF		LT RF		RT RF	RT RF	REBOM	



D	DIRECTO RWY 27 Straight in RWY 27				RNP AR RWY 27 SCBA: Requiere RF. Para sistemas Baro VNAV no compensados proc NA bajo -12°C o sobre 54°C para CAT A/B/C, y bajo -12°C o sobre 30°C para CAT D. Autorización requerida de acuerdo a DAN 06-22. RF required. For uncompensated Baro VNAV systems procedure NA below -12°C or above 54°C for CAT A/B/C, and below -12°C or above 30°C for CAT D. Authorization required according to DAN 06-22.
	RNP 0.1 DA 2030' (363')		RNP 0.30 DA 2110' (443')		
A	SSALR	WO SSALR	SSALR	WO SSALR	
B	1.2 Km	1.6 Km	1.2 Km	1.6 Km	
C		2.0 Km	1.6 Km	2.4 Km	
D					
Veloc. Terrestre Kts	80	100	120	140	160
Angulo DES 3,05° FPM	432'	540'	648'	755'	863'
MAPt en DA					
ALTN MNM: (800') 3.2 Km CAT A-D					RQR AUTORIZACION ESPECIAL PARA ACFT Y CREW SPECIAL ACFT AND AIRCREW AUTHORIZATION RQRD