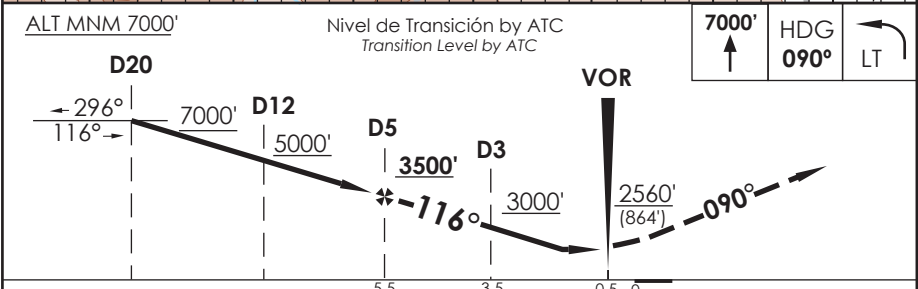
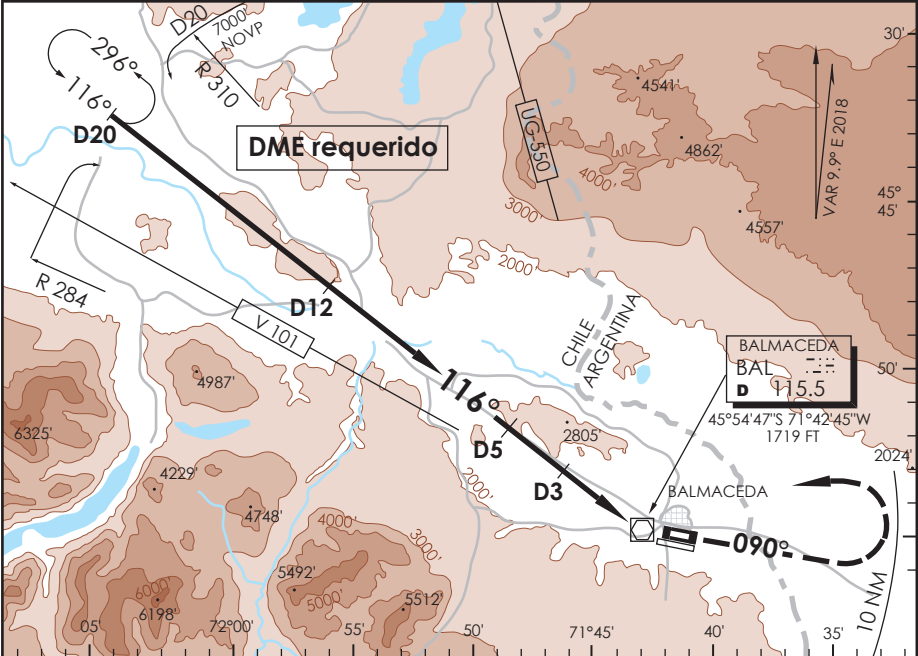


AD. BALMACEDA
BALMACEDA - CHILE

SCBA IAC 7
VOR Rwy 09L

APP PUERTO MONIT RADAR Puerto Mont Approach		128.3 / 119.7	TORRE BALMACEDA Balmaceda Tower	118.5	CONTROL TERRESTRE Ground Control	121.9
VOR BAL 115.5	FINAL APCH CRS 116°	MNM ALT D5 3500'	MDA(H) 2560' (864')	AD Elev 1696'	THR 09L Elev 1696'	 MSA 25 NM BAL
APCH FRUSTRADA: Ascenso 7000' HDG 090° dentro de 10 NM, viraje izquierda directo VOR BAL, luego según autorización ATC. Missed Apch: Climb to 7000' on HDG 090° within 10 NM, left turn direct to BAL VOR, then according to ATC clearance.						



C R O M O N I T A	DIRECTO RWY 09L Straight in RWY 09L *		CIRCULANDO Circling	ALTN Alternate Minimums
	MDA 2560' (864')			
A	2.0 Km		N A	VER PAG. GEN 2.19
B				SEE PAGE GEN 2.19

* Desalineado 26° respecto a RCL
 * Offset 26° from RWY center line

Veloc. Terrestre Kts	80	100	120	140	160
Angulo DES 3.5° fm D3	496'	619'	743'	867'	991'
Dist. FAF a MAPT 5 NM	3:45	3:00	2:30	2:09	1:53

DASA / SECCION AIS-MAP