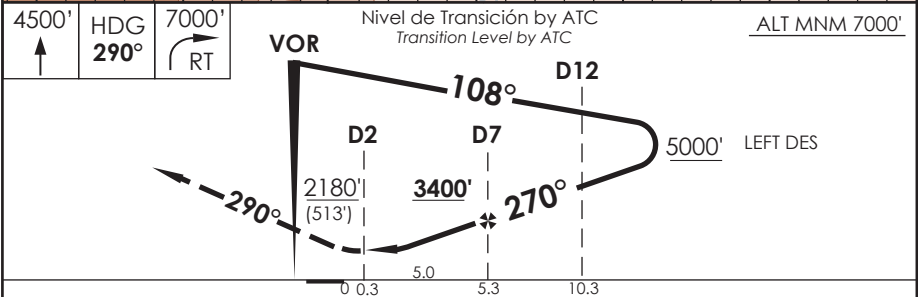
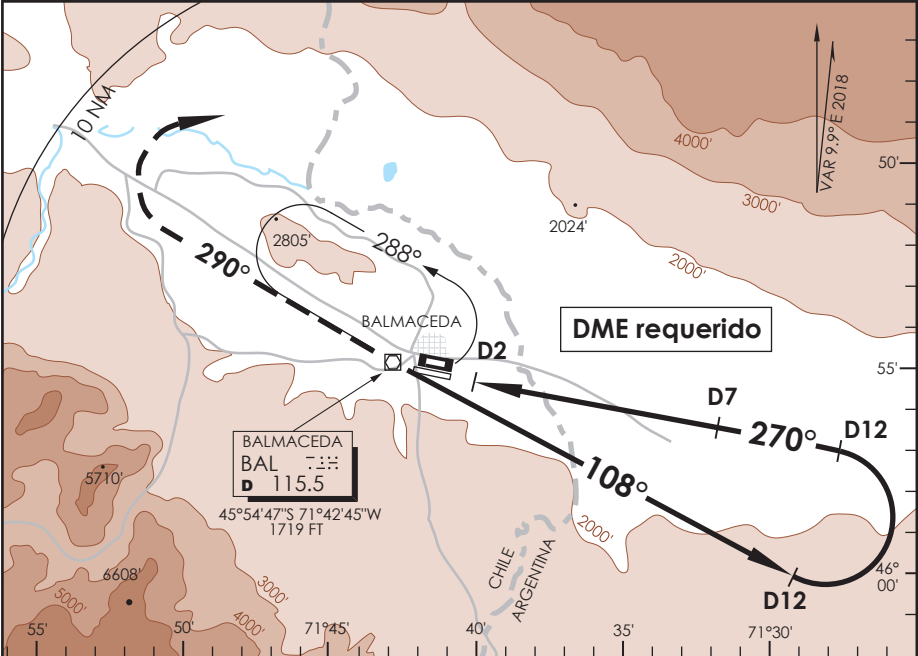


AD. BALMACEDA BALMACEDA - CHILE

SCBA IAC 8
VOR Y Rwy 27

APP PUERTO MONTI RADAR Puerto Montt Approach		128.3 / 119.7	TORRE BALMACEDA Balmaceda Tower	118.5	CONTROL TERRESTRE Ground Control	121.9
VOR BAL 115.5	FINAL APCH CRS 270°	MNM ALT D7 3400'	MDA(H) 2180' (484')	AD Elev THR 27R Elev 1696'	<div style="border: 1px solid black; border-radius: 50%; width: 60px; height: 60px; display: flex; align-items: center; justify-content: center; margin: 0 auto;">11300 FT</div> <p>MSA 25 NM BAL</p>	
<p>APCH FRUSTRADA: Ascenso 4500' HDG 290° dentro de 10 NM, viraje derecha directo BAL VOR, ascenso 7000 Ft según autorización ATC. Missed Apch: Climb to 4500' on HDG 290° within 10 NM, right turn direct to BAL VOR, climb to 7000' according to ATC clearance.</p>						



C A T E G O R Í A	--	SIDE STEP RWY 27R SIDE STEP RWY 27R	ALTN Alternate Minimums			
	--					
A		2180' (484')	1.6 Km	VER PAG. GEN 2.19 SEE PAGE GEN 2.19		
B	--				2260' (564')	3.2 Km
C						
D						

Veloc. Terrestre Kts	80	100	120	140	160
Angulo DES 3.0° FPM	427'	531'	637'	743'	849'
FAF to MAP 5.0 NM	3:45	3:00	2:30	2:08	1:52

DASA / SECCION ASMAP