

VAR 10,1° E 2016

TEN VOR/DME

DOTGU

U/V-123 / U/G-350
 U/V-670 / U/L-102

FL100

FL110

OPURA
 45°16'07"S
 71°57'18"W
 D40 BAL

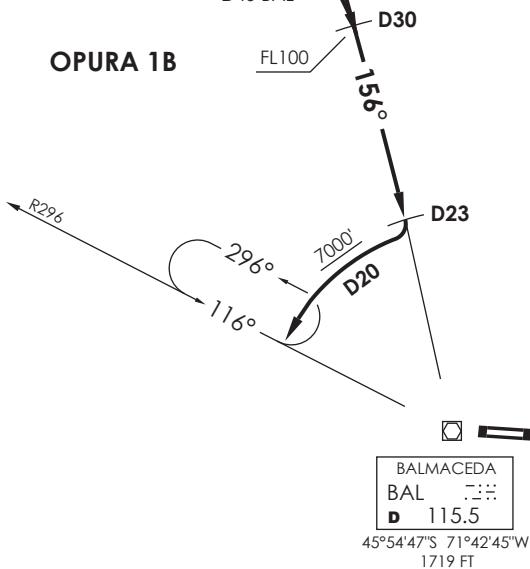
ARGOS
 45°15'40"S
 71°54'38"W
 D40 BAL

PTO. MONTT
 RDR 128.3 / 119.7

BALMACEDA
 TWR 118.5

OPURA 1B

ARGOS 1B



Nivel de Transición by ATC
 Transition Level by ATC

No se ajusta a escala / Not to scale

STAR OPURA 1B / ARGOS 1B

OPURA 1B: En OPURA INT (D40 NW BAL) abandonar AWY para interceptar R336 (TR156°). Cruzar OPURA INT FL100 o superior, D30 NW FL100 o superior. En D23 NW viraje derecha para orbitar D20 en descenso para 7000FT o según autorización ATC.

OPURA 1B: At OPURA INT (D40 NW BAL) leave AWY to intercept R336 (TR156°). Cross OPURA INT at or above FL100, D30 NW at or above FL100. On D23 NW turn right to join D20 descending to 7000FT, then according to ATC clearance.

ARGOS 1B: Desde ARGOS INT (D40 NW BAL) continuar en R336 (TR156°). Cruzar ARGOS INT FL110 o superior, D30 NW FL100 o superior. En D23 NW viraje derecha para orbitar D20 en descenso para 7000FT o según autorización ATC.

ARGOS 1B: From ARGOS INT (D40 NW BAL) continue on R336 (TR156°). Cross ARGOS INT at or above FL110, D30 NW at or above FL100. On D23 NW turn right to join D20 descending to 7000FT, then according to ATC clearance.