

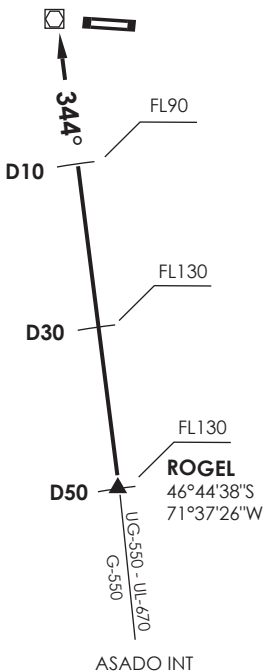
BALMACEDA - AD BALMACEDA
SCBA - STAR 4
ROGEL 1



PTO. MONTT
 RDR 128.3 / 119.7

BALMACEDA
 TWR 118.5

BALMACEDA
 BAL
 D 115.5
 45°54'47"S 71°42'45"W
 1719 FT



Nivel de Transición by ATC
 Transition Level by ATC

No se ajusta a escala / Not to scale

STAR ROGEL 1

En ROGEL INT (D50 S BAL VOR/DME) continuar en R164 (TR344°) a BAL VOR/DME. Cruzar ROGEL FL130 o superior, cruzar D30 S FL130 o superior, D10 S FL90 o superior, directo BAL VOR/DME 7000FT o superior, luego según autorización ATC.

At ROGEL (D50 S BAL VOR/DME) continue on R164 (TR344°) to BAL VOR/DME. Cross ROGEL at or above FL130, cross D30 S at or above FL130, D10 S at or above FL90 direct to BAL VOR/DME at or above 7000FT, then according to ATC clearance.

DASA / SECCION AIB-MAP