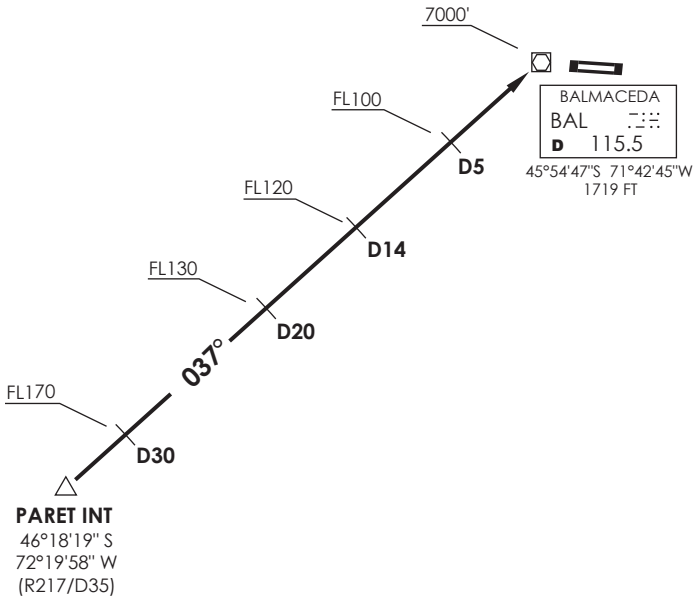


VAR 10.1° E 2016

**PTO. MONT**  
 RDR 128.3 / 119.7

**BALMACEDA**  
 TWR 118.5



Nivel de Transición by ATC  
 Transition Level by ATC

No se ajusta a escala / Not to scale

**STAR PARET 1A**

Desde PARET INT proceder directo a BAL VOR/DME via R217 (TR037°). Cruzar D30 FL170 o superior, D20 FL130 o superior, D14 FL120 o superior, D5 FL100 o superior, BAL VOR 7000FT o superior, luego según autorización ATC.

From PARET INT proceed direct to BAL VOR/DME via R217 (TR037°). Cross D30 at or above FL170, D20 at or above FL130, D14 at or above FL120, D5 at or above FL100, BAL VOR at or above 7000FT, then according to ATC clearance.

DASA / SECCION AIS-MAP