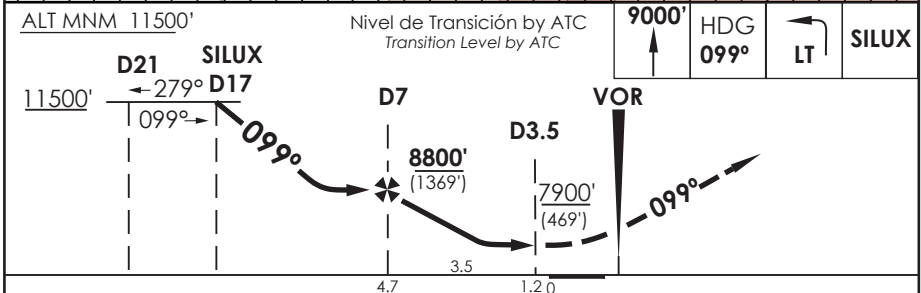
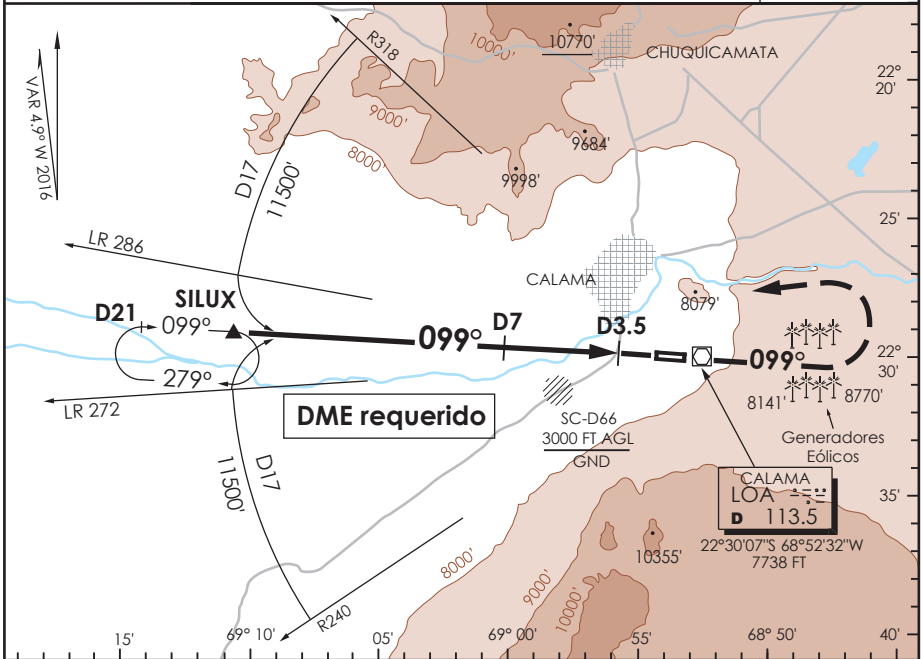


AD. EL LOA CALAMA - CHILE

SCCF IAC 1
VOR Rwy 10

APP ANTOFAGASTA RADAR APP Antofagasta Radar	120.9	TORRE CALAMA Calama Tower	118.7	CONTROL TERRESTRE Ground Control	121.8
VOR LOA 113.5	FINAL APCH CRS 099°	MNM ALT D 7.0 8800' (1369')	MDA(H) 7900' (469')	AD Elev 7631' THR 10 Elev 7431'	16100 FT MSA 25 NM LOA
APCH FRUSTRADA: Ascenso a 9000' HDG 099°, viraje izquierda ascenso 11500', ingrese HLDG 099° derecho o según autorización ATC. Missed Apch: Climb to 9000' on HDG 099°, left turn climbing to 11500', enter on HLDG 099° right or according to ATC clearance.					



PROGRAMA	DIRECTO RWY 10 <i>Straight in RWY 10</i>	CIRCULANDO NORTE * <i>Circling North *</i>	ALTN <i>Alternate Minimums</i>		
	MDA 7900' (469')				
A	1.6 Km	8180' (549')	1.6 Km	(800')	3.2 Km
B		8360' (729')			
C	2.4 Km	8860' (1229')	4.8 Km	(1229')	4.8 Km
D					

* NGT LDG RWY 28 NA WO PAPI

Veloc. Terrestre Kts	80	100	120	140	160
Angulo DES 2,64° PFM	374'	467'	560'	654'	747'
FAF to MAP 3.5 NM	2:38	2:06	1:45	1:30	1:19

DATA / SECCION AIS MAP