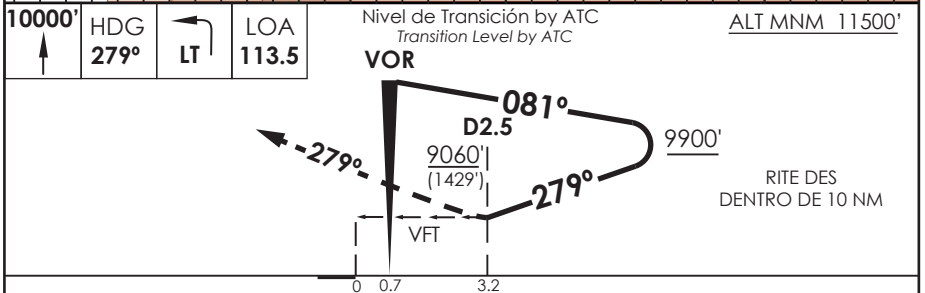
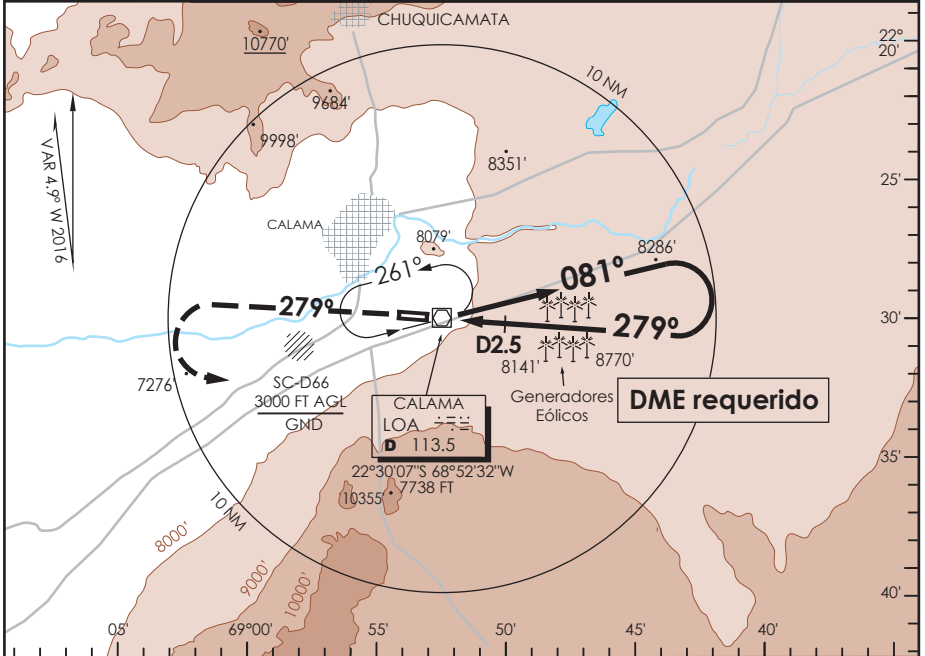


AD. EL LOA CALAMA - CHILE

SCCF IAC 2
VOR Z Rwy 28

APP ANTOFAGASTA RADAR APP Antofagasta Radar	120.9	TORRE CALAMA Calama Tower	118.7	CONTROL TERRESTRE Ground Control	121.8
VOR LOA 113.5	FINAL APCH CRS 279°	WO FAF	MDA(H) 9060' (1429')	AD Elev 7631' THR 28 Elev 7631'	16100 FT MSA 25 NM LOA
APCH FRUSTRADA: Ascenso a 10000' HDG 279°, viraje izquierda en ascenso para 11500' directo LOA VOR o según autorización ATC. Missed Apch: Climb to 10000' on HDG 279°, left turn climbing to 11500', direct to LOA VOR or according to ATC clearance.					



C I R C U L A N D O	DIRECTO RWY 28 <i>Straight in RWY 28</i>		CIRCULANDO NORTE <i>Circling North</i>	ALTN <i>Alternate Minimums</i>	
	MDA 9060' (1429')			9060' (1429')	(1429')
A	1.2 Km	2.0 Km	2.0 Km		
B	1.6 Km	2.4 Km	2.4 Km	3.2 Km	
C	4.8 Km		4.8 Km	4.8 Km	
D	4.8 Km		4.8 Km	4.8 Km	
NGT LDG RWY 28 NA WO PAPI					

DASA / SECCION ALS-MAP