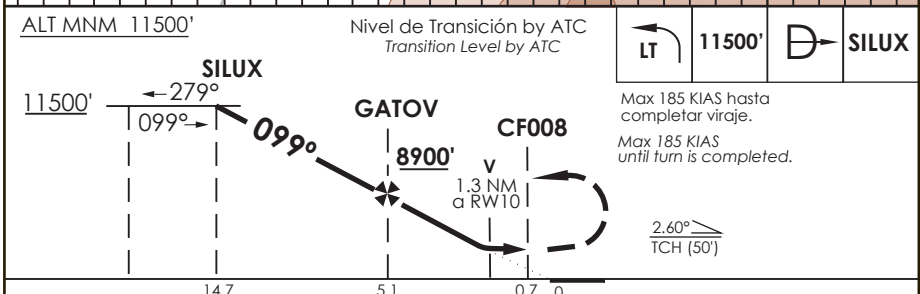
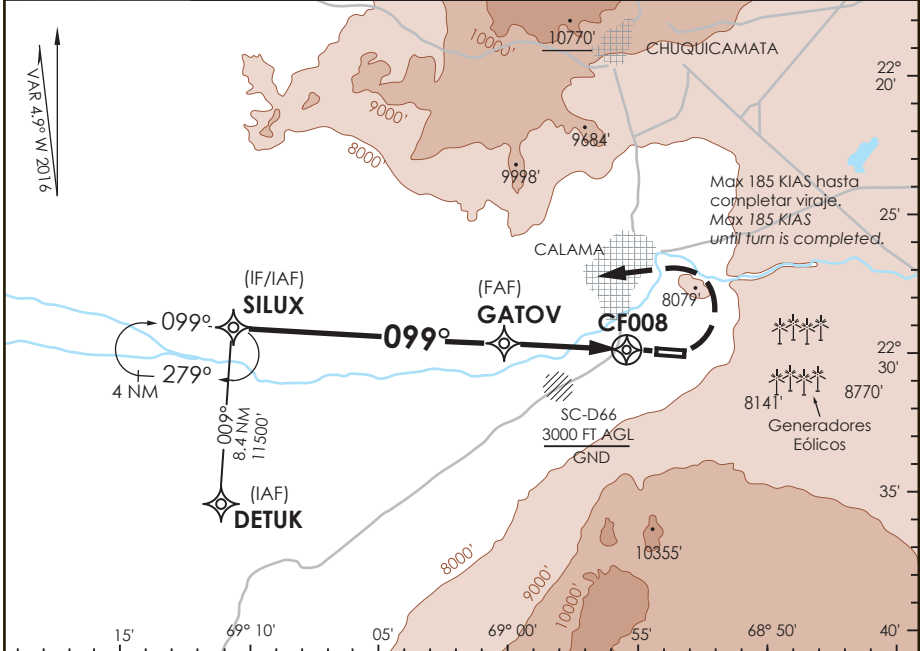


AD. EL LOA CALAMA - CHILE

SCCF IAC 4 RNAV (GNSS) Y Rwy 10

APP ANTOFAGASTA RADAR APP Antofagasta Radar	120.9	TORRE CALAMA Calama Tower	118.7	CONTROL TERRESTRE Ground Control	121.8
RNAV	FINAL APCH CRS 099°	MNM ALT GATOV 8900'	MDA(H) 7900'(469')	AD Elev 7631' THR 10 Elev 7431'	16100 FT
APCH FRUSTRADA: Viraje izquierda en ascenso para 11500' directo SILUX SILUX ingreso HLDG 099° derecho o según autorización ATC.					
Missed Apch: Left turn climbing to 11500' direct to SILUX, enter on HLDG 099° right or according to ATC clearance.					MSA 25 NM RWY10



PROGRAMA	DIRECTO RWY 10	Straight in RWY 10		CIRCULANDO NORTE * Circling North *	ALTN Alternate Minimums	
	LNAV MDA 7900' (469')					
A	1.6 Km			8180' (549')	1.6 Km	(800') 3.2 Km
B	1.6 Km			8360' (729')	3.2 Km	
C	2.4 Km			8860' (1229')	4.8 Km	(1229') 4.8 Km
D	2.4 Km					
- Requiere aprobación RNP APCH. - RNP APCH approval RQRD.				* NGT LDG RWY 28 NA WO PAPI		
Veloc. Terrestre Kts	80	100	120	140	160	
Angulo DES 2,6° FPM	368'	460'	552'	644'	736'	
MAPt en CF008						

DATA / SECCION A6-MAP