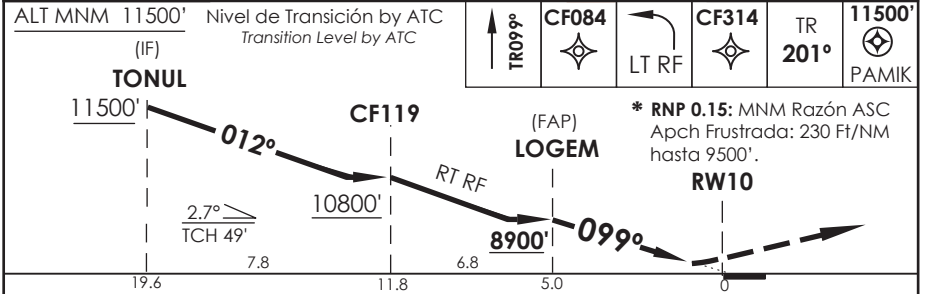
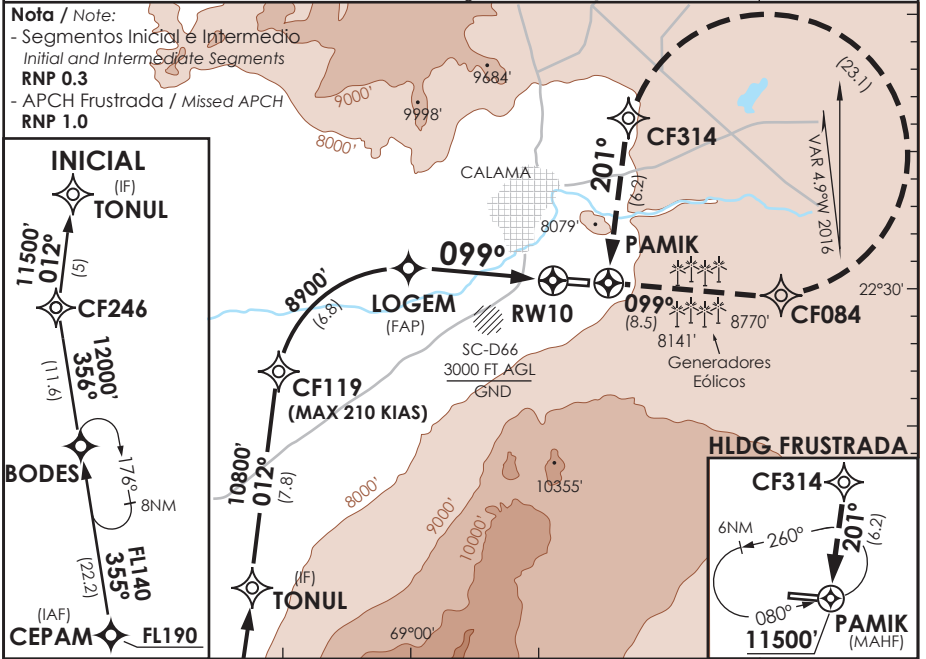


AD. EL LOA CALAMA - CHILE

SCCF IAC 6
RNAV (RNP) Z Rwy 10

APP ANTOFAGASTA RADAR APP Antofagasta Radar	120.9	TORRE CALAMA Calama Tower	118.7	CONTROL TERRESTRE Ground Control	121.8
RNAV	FINAL APCH CRS 099°	MNM ALT LOGEM 8900'	DA/H ver mínimos DA/H refer to minimums	AD Elev THR 10 Elev 7631' 7431'	16100 FT MSA 25 NM RW10
<p>APCH FRUSTRADA: Ascenso en TR099° hacia CF084, continue ascenso via LT RF hasta CF314, luego en TR201° directo a PAMIK 11500', ingrese HLDG 080° izquierda o según autorización ATC. Missed Apch: Climb on TR099° to CF084, continue climbing via LT RF until CF314, then on TR201° direct to PAMIK 11500', enter on HLDG 080° left or according to ATC clearance.</p>					



CATEGORIA	DIRECTO RWY 10	Straight in RWY 10					RNP AR RWY 10 SCCF: Requiere RF. Para sistemas Baro VNAV no compensados proc NA bajo -5°C o sobre 40°C para CAT A/B/C, y bajo -5°C o sobre 30°C para CAT D. Autorización requerida de acuerdo a DAN 06-22. RF required. For uncompensated Baro VNAV systems procedure NA below -5°C or above 40°C for CAT A/B/C, and below -5°C or above 30°C for CAT D. Authorization required according to DAN 06-22.
	RNP 0.15 *	DA 7880' (449')	RNP 0.30			DA 8000' (569')	
A	1.6 Km					MNM ALTN: (800') 3.2 Km CAT A-D RQR AUTORIZACIÓN ESPECIAL PARA ACFT Y CREW SPECIAL ACFT AND AIRCREW AUTHORIZATION RQRD	
B	1.6 Km						
C	2.4 Km		2.8 Km				
D	2.4 Km		2.8 Km				
Veloc. Terrestre Kts	80	100	120	140	160	CAMBIO: ← HGT LOGEM / VIS / → ALTN Change: ← LOGEM HGT / VIS / → ALTN	
Angulo DES 2.7° FPM	382'	478'	573'	669'	764'		
MAPt en DA							

DASA / SECCION AS-MAP