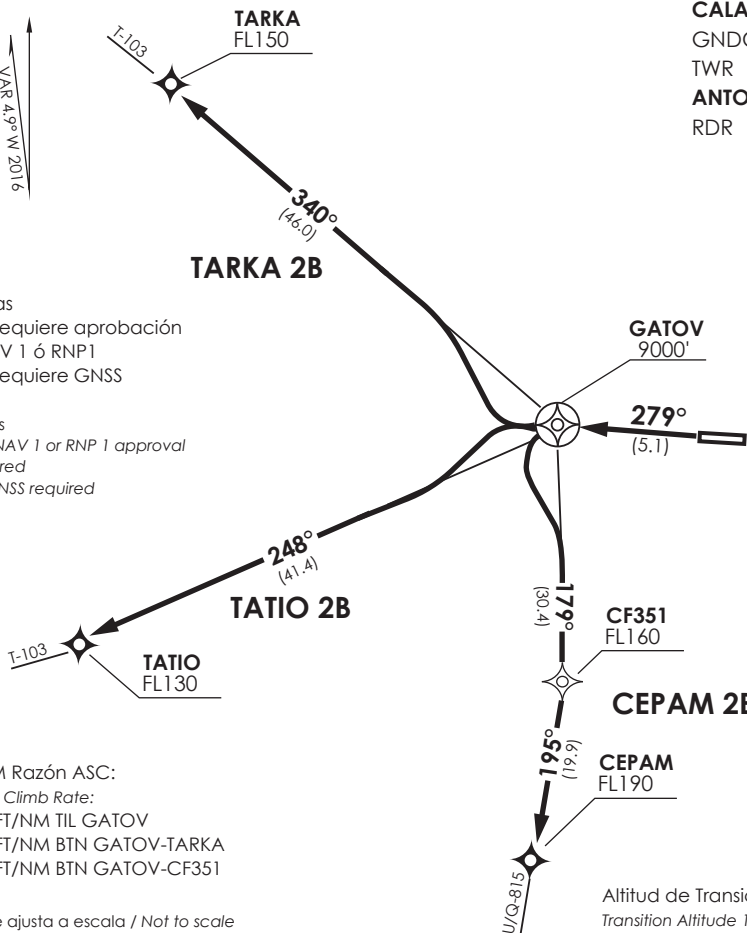


CALAMA

GNDC 121.8
TWR 118.7
ANTOFAGASTA
RDR 120.9

VAR 4.9° W 2016



Notas

- 1.- Requiere aprobación RNAV 1 ó RNP1
- 2.- Requiere GNSS

Notes

- 1.- RNAV 1 or RNP 1 approval required
- 2.- GNSS required

MNM Razón ASC:

MNM Climb Rate:

- 300 FT/NM TIL GATOV
- 300 FT/NM BTN GATOV-TARKA
- 300 FT/NM BTN GATOV-CF351

No se ajusta a escala / Not to scale

Altitud de Transición 11500FT
Transition Altitude 11500FT

CEPAM 2B/TATIO 2B/TARKA 2B RNAV

CEPAM 2B: Ascender en RWY HDG a GATOV, viraje izquierda para continuar ascenso en TR179° a CF351, viraje derecha directo a CEPAM para interceptar AWY U/Q-815. Cruzar GATOV a 9000 FT o superior, CF351 a FL160 o superior, CEPAM a FL190 o superior.

CEPAM 2B: Climb on RWY HDG to GATOV, turn left to continue climbing on TR179° to CF351, then right turn direct to CEPAM to intercept AWY U/Q-815. Cross GATOV at or above 9000 FT, cross CF351 at or above FL160, cross CEPAM at or above FL190.

TATIO 2B: Ascender en RWY HDG a GATOV, viraje izquierda para continuar ascenso en TR248° a TATIO para interceptar AWY T-103. Cruzar GATOV a 9000 FT o superior, TATIO a FL130 o superior.

TATIO 2B: Climb on RWY HDG to GATOV, turn left to continue climbing on TR248° to TATIO to intercept AWY T-103. Cross GATOV at or above 9000 FT, cross TATIO at or above FL130.

TARKA 2B: Ascender en RWY HDG a GATOV, viraje derecha para continuar ascenso en TR340° a TARKA para interceptar AWY T-103. Cruzar GATOV a 9000 FT o superior, TARKA a FL150 o superior.

TARKA 2B: Climb on RWY HDG to GATOV, turn right to continue climbing on TR340° to TARKA to intercept AWY T-103. Cross GATOV at or above 9000 FT, cross TARKA at or above FL150