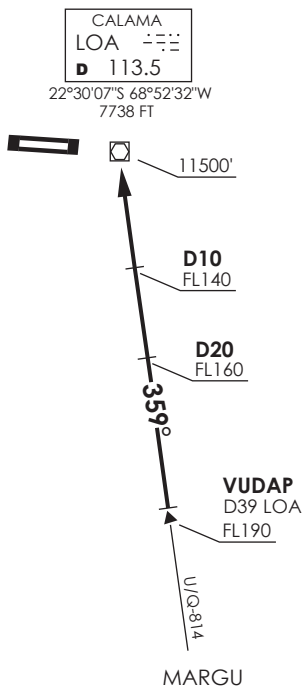


CALAMA - AD EL LOA  
**SCCF - STAR 3 RWY 28**  
**VUDAP 2**

**ANTOFAGASTA**  
 RDR 120.9

**CALAMA**  
 TWR 118.7

VAR 4.9° W 2016



Nivel de Transición by ATC  
 Transition Level by ATC

No se ajusta a escala / Not to scale

### STAR VUDAP 2

En VUDAP, abandonar AWY directo a LOA VOR/DME. Cruzar VUDAP a FL190 o superior, D20 S FL160 o superior, D10 S FL140 o superior, LOA VOR/DME 11500FT o superior, luego según autorización ATC.

*At VUDAP, leave AWY direct to LOA VOR/DME. Cross VUDAP at or above FL190, D20 S at or above FL160, D10 S at or above FL140, LOA VOR/DME at or above 11500FT, then according to ATC clearance.*

DASA / SECCION AIB-MAP