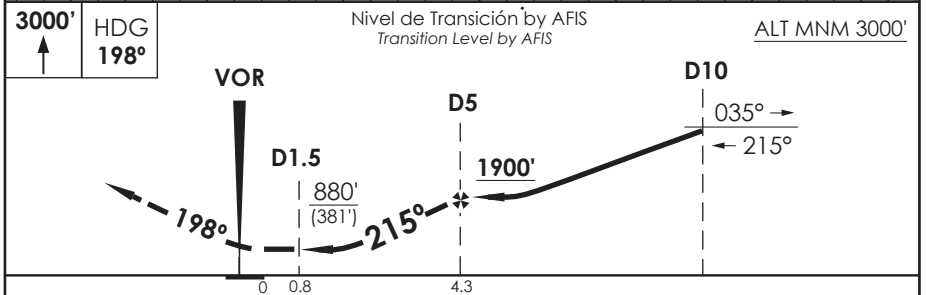
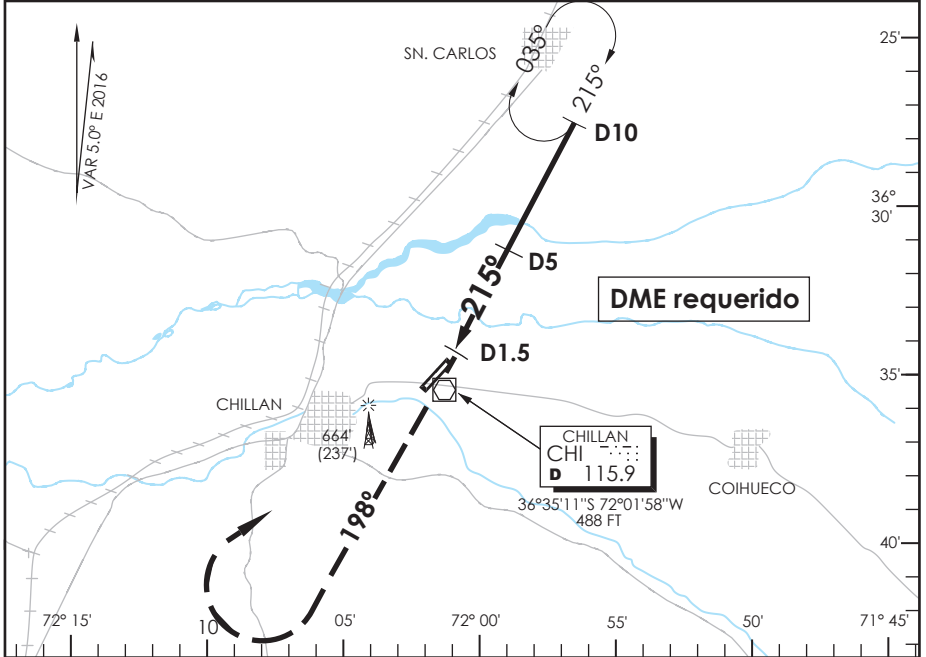


AD. GRAL. BERNARDO O'HIGGINS
CHILLAN - CHILE

SCCH IAC 1
VOR Z Rwy 22

ACC SANTIAGO Santiago Center		126.3	CHILLAN INFORMATION Chillan Information		127.7
VOR CHI 115.9	FINAL APCH CRS 215°	MNM ALT D5 1900'	MDA(H) 880'(381')	AD Elev. THR 22 Elev.	499' 499'
APCH FRUSTRADA: Ascenso 3000' HDG 198°, regrese derecha a HLDG 215° derecho.					12400 FT
Missed Apch: Climb to 3000' on HDG 198°, right turn return to enter on HLDG 215° right.					
					MSA 25 NM CHI



CATEGORIA	DIRECTO Rwy 22 Straight in Rwy 22	CIRCULANDO Circling	ALTN Alternate Minimums
	MDA 880' (381')		
A	1.6 Km	880' (381')	(800') 3.2 Km
B		960'	
C		(461')	

Veloc. Terrestre Kts	80	100	120	140	160
Angulo DES 2.96° FPM	419'	524'	628'	733'	838'
Dist. FAF a MAPT 3.5 NM	2:38	2:06	1:45	1:30	1:19

CAMBIO: Cuadro Velocidad/Angulo DES/ ← HGT D5/VAR DGAC AMDT 80 08 DICIEMBRE 2016
 Change: Table speed/DES Angle/ ← HGT D5/VAR

DASA / SECCION AIS-MAP