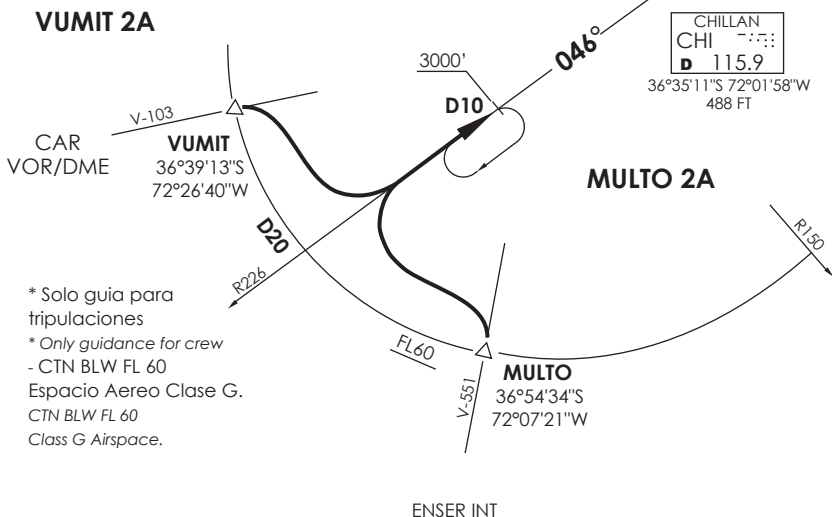


SANTIAGO
 CTL 126.3

CHILLAN
 INFO 127.8



* Solo guía para tripulaciones
 * Only guidance for crew
 - CTN BLW FL 60
 Espacio Aereo Clase G.
 CTN BLW FL 60
 Class G Airspace.

Nivel de Transición by ATC
 Transition Level by ATC

No se ajusta a escala / Not to scale

STAR VUMIT 2A / MULTO 2A

VUMIT 2A: En AWY V-103, cruzando VUMIT INT (D20 CHI VOR/DME) abandonar AWY e interceptar R226 (TR046°). Cruzar D10 a 3000FT o superior.

VUMIT 2A: On AWY V-103, crossing VUMIT INT (D20 CHI VOR/DME) leave AWY and intercept R226 (TR046°). Cross D10 at or above 3000FT.

MULTO 2A: En AWY V-551, cruzando MULTO INT (D20 CHI VOR/DME) abandonar AWY e interceptar R226 (TR046°). Cruzar D10 a 3000FT o superior.

MULTO 2A: On AWY V-551, crossing MULTO INT (D20 CHI VOR/DME) leave AWY and intercept R226 (TR046°). Cross D10 at or above 3000FT.

DASA / SECCION AIS-MAP