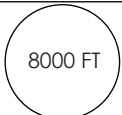
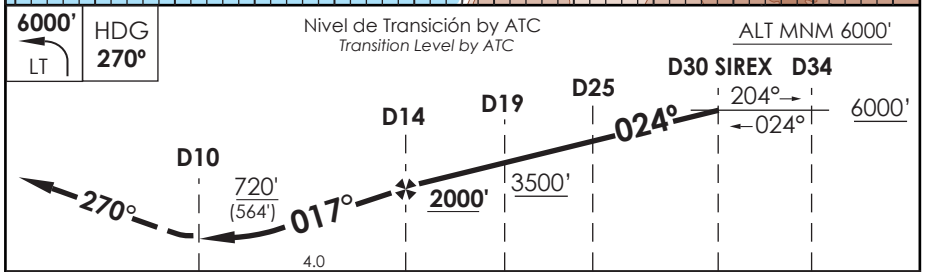
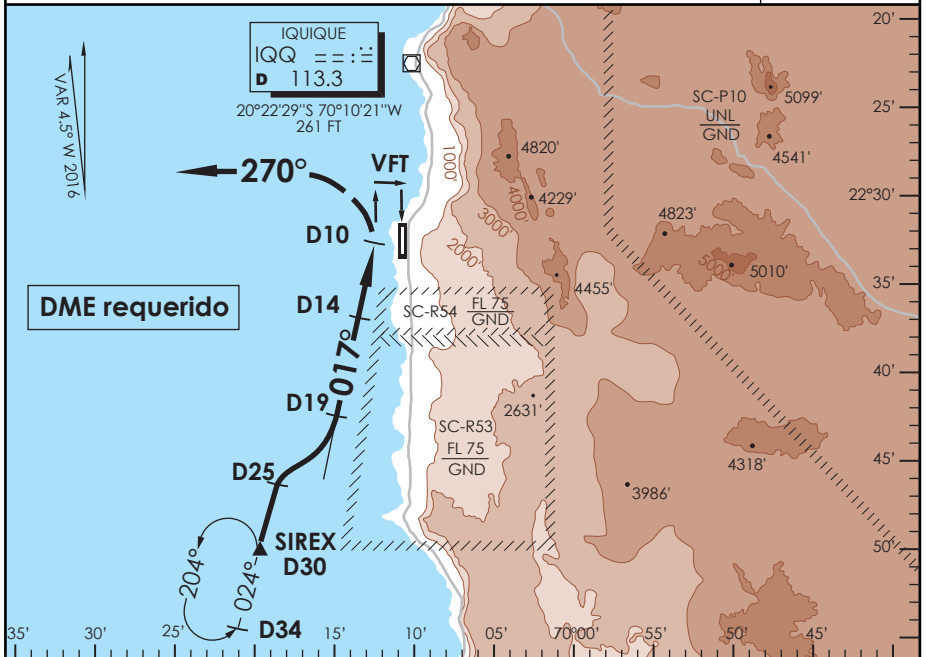


# AP. DIEGO ARACENA IQUIQUE - CHILE

SCDA IAC 3  
VOR A

APP IQUIQUE RADAR Iquique Radar Approach 122.7		TORRE IQUIQUE Iquique Tower 118.9		CONTROL TERRESTRE Ground Control 121.7	
VOR IQQ <b>113.3</b>	FINAL APCH CRS <b>017°</b>	MNM ALT D 14 <b>2000'</b>	MDA(H) <b>720'(564')</b>	AD Elev. <b>156'</b>	 MSA 25 NM IQQ
APCH FRUSTRADA: Viraje izquierda HDG 270° en ascenso a 6000', luego según autorización ATC. <i>Missed Apch: Left turn HDG 270° climbing to 6000', then according to ATC clearance.</i>					



CATEGORIA	CIRCULANDO OESTE * Circling West		ALTN Alternate Minimums	
	A	720' (564')	3.2 Km	CEIL 800'
B	---	CEIL 900'		
C	---			
D	---			

\* LDG NGT RWY 01 NA WO PAPI  
*Landing at night in RWY 01 not authorized without PAPI*

Veloc. Terrestre Kts	80	100	120	140	160
FAF to MAPt 4.0 NM	3:00	2:24	2:00	1:43	1:30
MAPt en D10					

CAMBIO: ← HGT FAF  
Change: ← FAF HGT

DGAC AMDT 80

08 DICIEMBRE 2016

DASA /SECCION AS-MAP