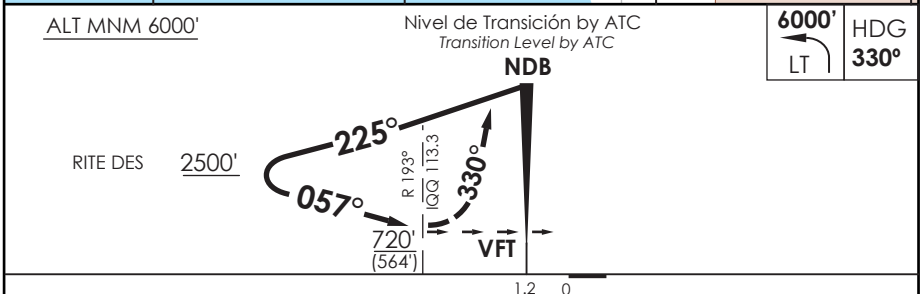
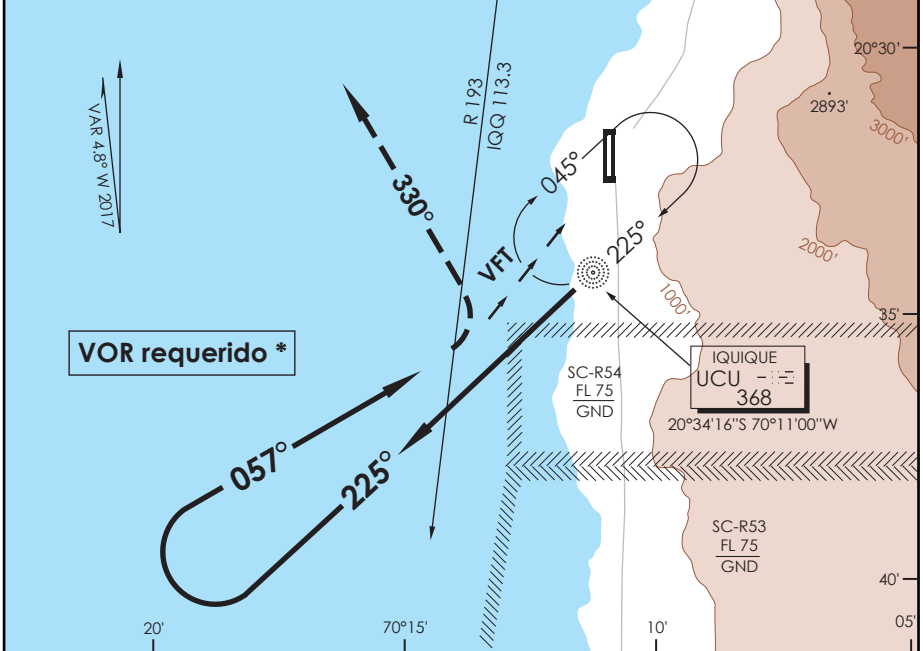


APP IQUIQUE RADAR Iquique Radar Approach 122.7		TORRE IQUIQUE Iquique Tower 118.9		CONTROL TERRESTRE Ground Control 121.7	
NDB UCU 368	FINAL APCH CRS 057°	WO FAF	MDA(H) 720'(564')	AD Elev. 156'	8000 FT MSA 25 NM IQQ
APCH FRUSTRADA: Viraje izquierda HDG 330°, ascenso a 6000', luego según autorización ATC. Missed Apch: Left turn HDG 330° climbing to 6000', then according to ATC clearance.					



C U D O M E S T R O		CIRCULANDO OESTE ** Circling West	ALTN Alternate Minimums
	A	720' (564')	3.2 Km VER PAG. GEN 2.19
	B	CEIL 800'	
	C	800' (644') CEIL 900'	
D			

*WO IQQ VOR: MAPT al finalizar viraje base, MDA 2000' Without IQQ VOR: MAPT at the end of base turn, MDA 2000'
 **LDG NGT RWY 01 NA WO PAPI Landing at night in RWY 01 not authorized without PAPI

DASA / SECCION AIS-MAP